

Regional Profile – Q3 2018

The Mid-East region accounted for 14% of employment in Ireland (327,100 persons)



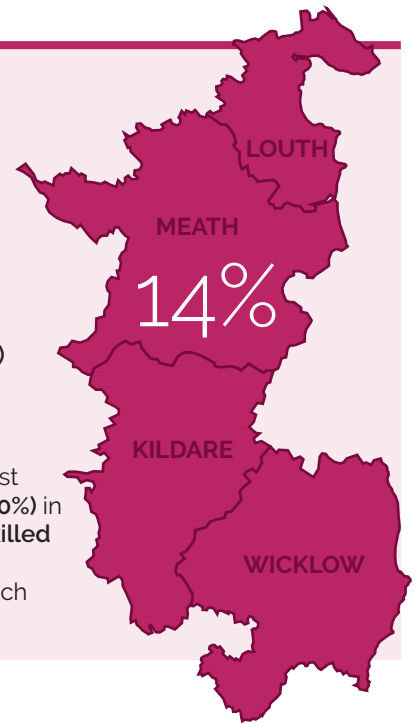
Wholesale & retail accounted for the largest number of persons employed in the Mid-East in Q3 2018 (45,900). This was followed by **industry** and **health & social work** (41,300 each)



The highest 5 year growth rate in employment was recorded in **construction** (71%), followed by **public admin and defence** (49%) and **transportation** (41%)



Professionals (66,400) accounted for the largest share of occupations (20%) in Q3 2018, followed by **skilled trades** and **associate professionals** at 13% each



Sector focus

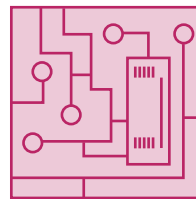
Growth



The **health & social work** sector has produced the largest number of additional jobs since 2013 (10,300)

Manufacturing

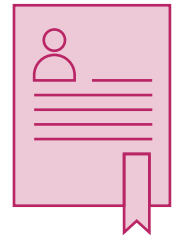
39%



High/medium-high technology accounted for 39% of all manufacturing employment in the Mid-East region

Work permits

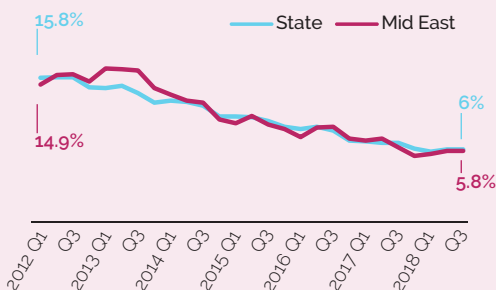
7.5%



The Mid-East accounted for 7.5% of all work permits in 2018, with 41% of those permits in **health & social work**.

Unemployment

Unemployment rate



5.8%
(20,100 persons)

The unemployment rate in Q3 2018 was 5.8%, down from 14.9% in Q1 2012

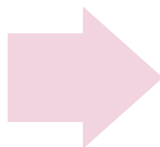
43%

43% of all unemployed persons in the Mid-East region were aged 15-29

49%

49% of those unemployed in the Mid-East were male

Companies with recent job announcements in the Mid-East region



WuXi Biologics
Global Solution Provider

NATIONAL PEN
Your image is our business!™

CAIRN
PLC

W
Wasdell
Group

MURPHY
WORLD-CLASS INFRASTRUCTURE