

This is FET

Roma Community 2023



SOLAS
learning works



Co-funded by
the European Union



Rialtas na hÉireann
Government of Ireland

**Further
Education
& Training**

A Report by the
National FET Statistics, Data and Insights Unit in SOLAS
November 2023

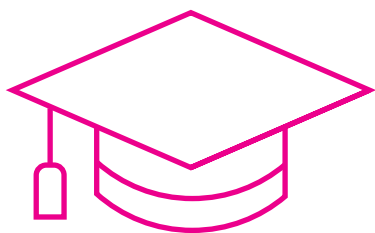
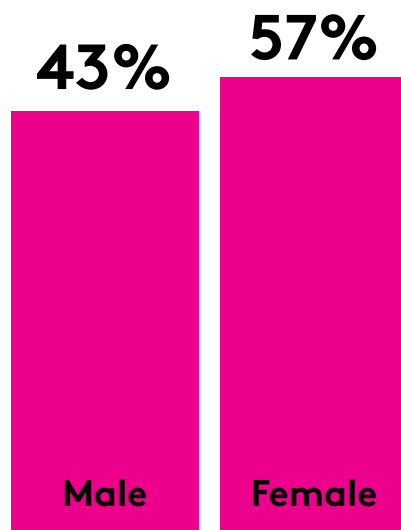
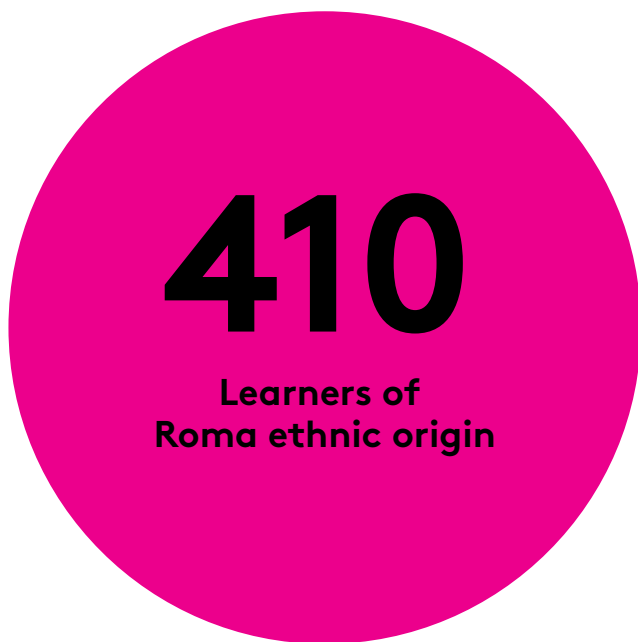
Authors

Darragh Walsh
Selen Guerin

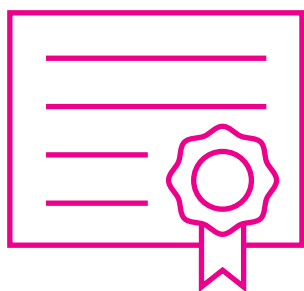
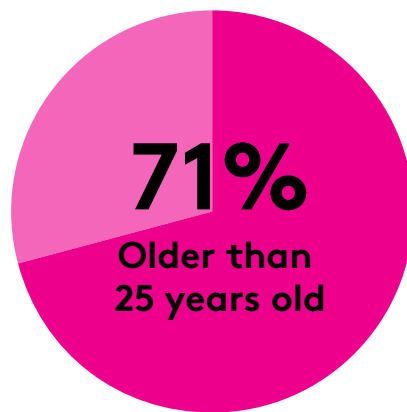
All data is sourced from the Programme and Learner Support Systems (PLSS) database. PLSS collects and processes the personal data of the FET learners who are enrolled in SOLAS funded programmes. This report excludes apprenticeship provision.

The National FET Statistics, Data and Insights Unit would like to acknowledge the assistance of the ETB staff involved in submitting data to SOLAS.

Enrolments



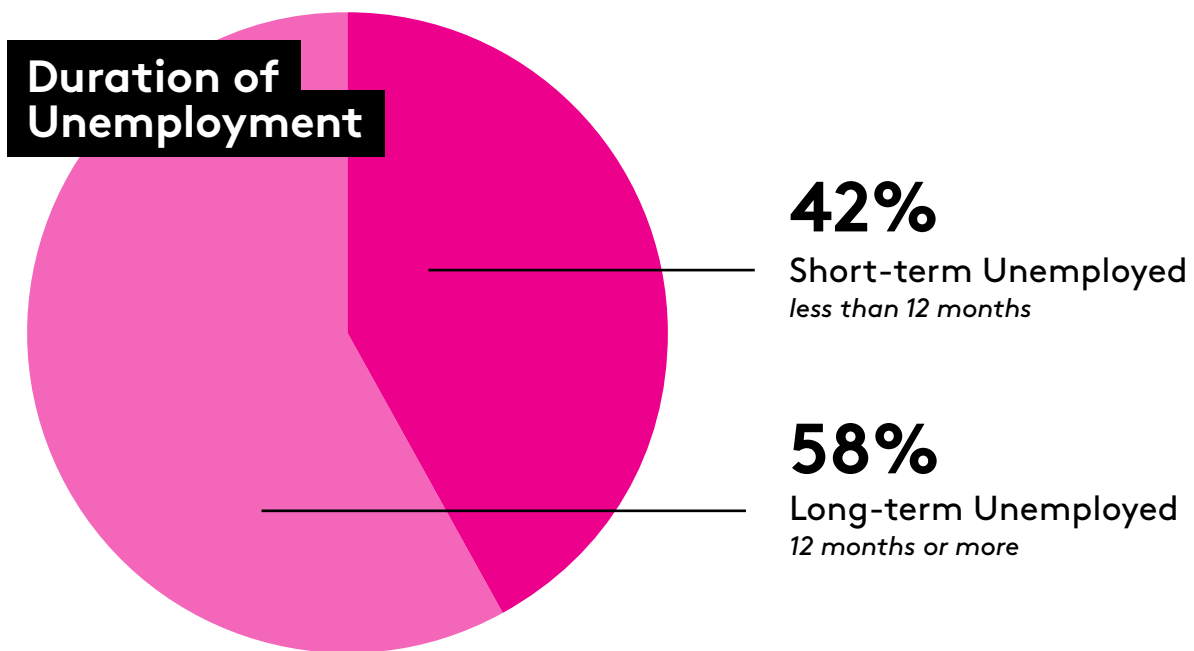
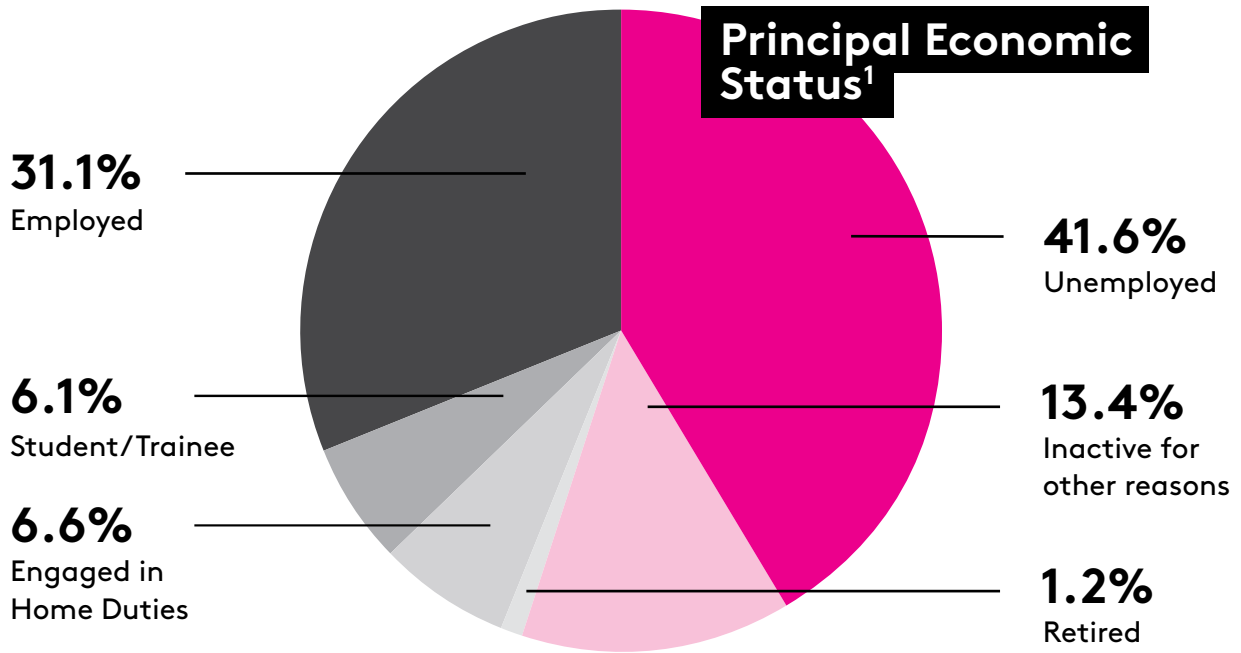
89%
Full and partial
completions



68%
Certification rate

In 2023, the total number of Roma enrolments reported in further education and training was 410. Of these learner enrolments, 43% were men and 57% were women. The majority (71%) of these learners were older than 25 years of age.

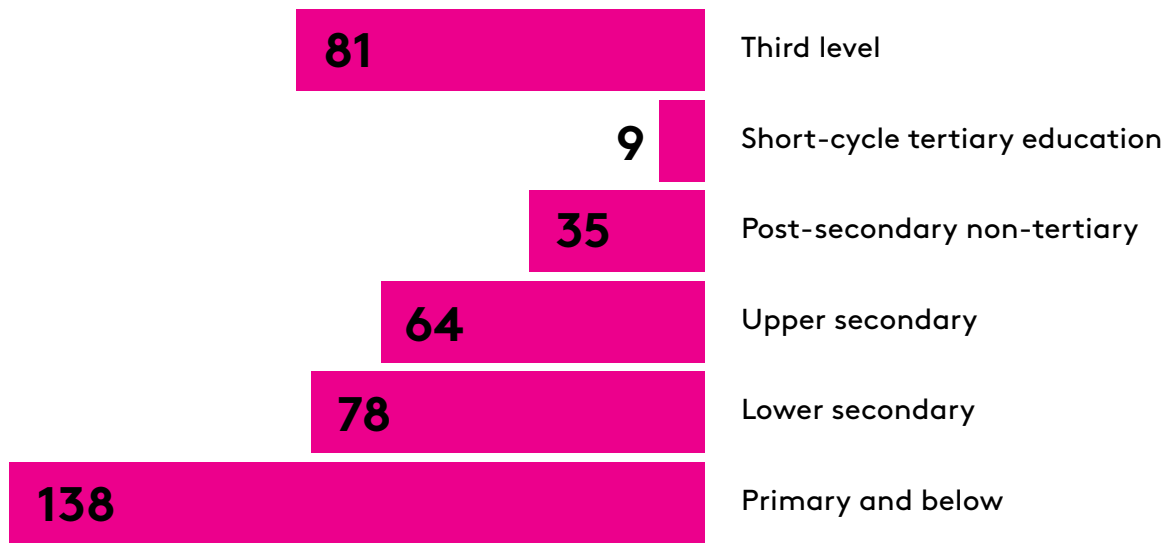
Of the 410 Roma enrolments, 89% partially or fully completed a course in 2023. The certification rate for Roma who completed certified courses was 68%.



The majority of Roma learners were either unemployed or employed. Of those who were unemployed, 58% were unemployed for 12 months or more.

¹ The Principal Economic Status response rate for Roma enrolments was 99.8%.

Highest Level of Formal Education²



Approximately (53.3%) 216 of Roma reported that they had attained a lower secondary or primary education and below education level prior to joining further education and training.



Of the 410 Roma enrolments, 9 reported that they were part of a jobless household, whereas 43 reported that they were dependants in a jobless household. There were also 55 Roma that reported they had a long-lasting condition.

² It should be noted that this figure is an estimate and includes only those cases where previous levels of education were captured.

| ETB | Learners |
|------------------------------|----------|
| Cavan and Monaghan ETB | 21 |
| City of Dublin ETB | 41 |
| Cork ETB | 17 |
| Donegal ETB | 10 |
| Dublin and Dun Laoghaire ETB | 55 |
| Kerry ETB | 16 |
| Kildare and Wicklow ETB | 33 |
| Laois and Offaly ETB | 20 |
| Limerick and Clare ETB | 8 |
| Longford and Westmeath ETB | 34 |
| Louth and Meath ETB | 32 |
| Mayo, Sligo and Leitrim ETB | 27 |
| Tipperary ETB | 17 |
| Waterford and Wexford ETB | 76 |

Of the 410 Romas enrolled in FET courses, Roma enrolments were primarily concentrated in Waterford and Wexford ETB, Kildare and Wicklow ETB, Dublin and Dun Laoghaire ETB and City of Dublin ETB⁴. There were an additional 7 learners from the Roma community in Galway and Roscommon ETB, Kilkenny and Carlow ETB and in VSCSS.

³ Learners here are unique within ETBs but not necessarily across ETBs.

⁴ Any learner count less than 5 is excluded in this table.

Programme Category⁵

| Programme Category | Learners |
|----------------------------|----------|
| Adult Literacy Groups | 34 |
| BTEI Groups | 37 |
| Community Education | 60 |
| Community Training Centres | 9 |
| ESOL | 152 |
| Evening Training | 28 |
| PLC | 22 |
| Skills to Advance | 13 |
| Skills for Work | 8 |
| Specific Skills Training | 12 |
| VTOS Core | 6 |
| Youthreach | 50 |

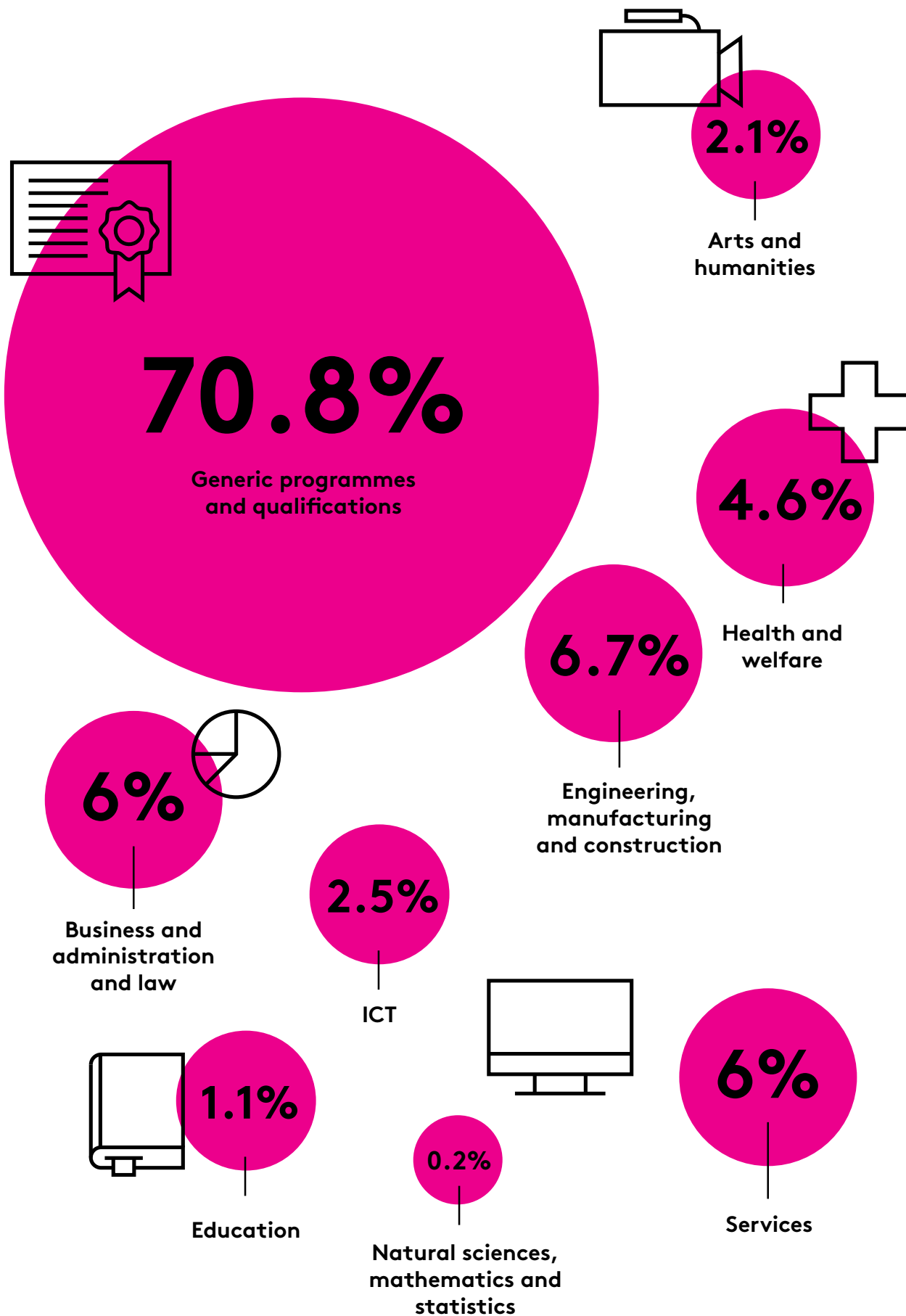
Among FET programmes, enrolments were primarily concentrated among English for Speakers of Other Languages (ESOL), Community Education, Youthreach, Back to Education Initiative (BTEI) and Adult Literacy courses.

There were 13 additional learners who were also enrolled in the following programme categories during 2023: e-Learning, FET cooperation hours, ITABE, Justice Workshop, Local Training Initiatives and Specialist Training Providers⁶.

⁵ Each learner is counted once within each programme, but is allowed to be counted more than once if they did courses in different programmes.

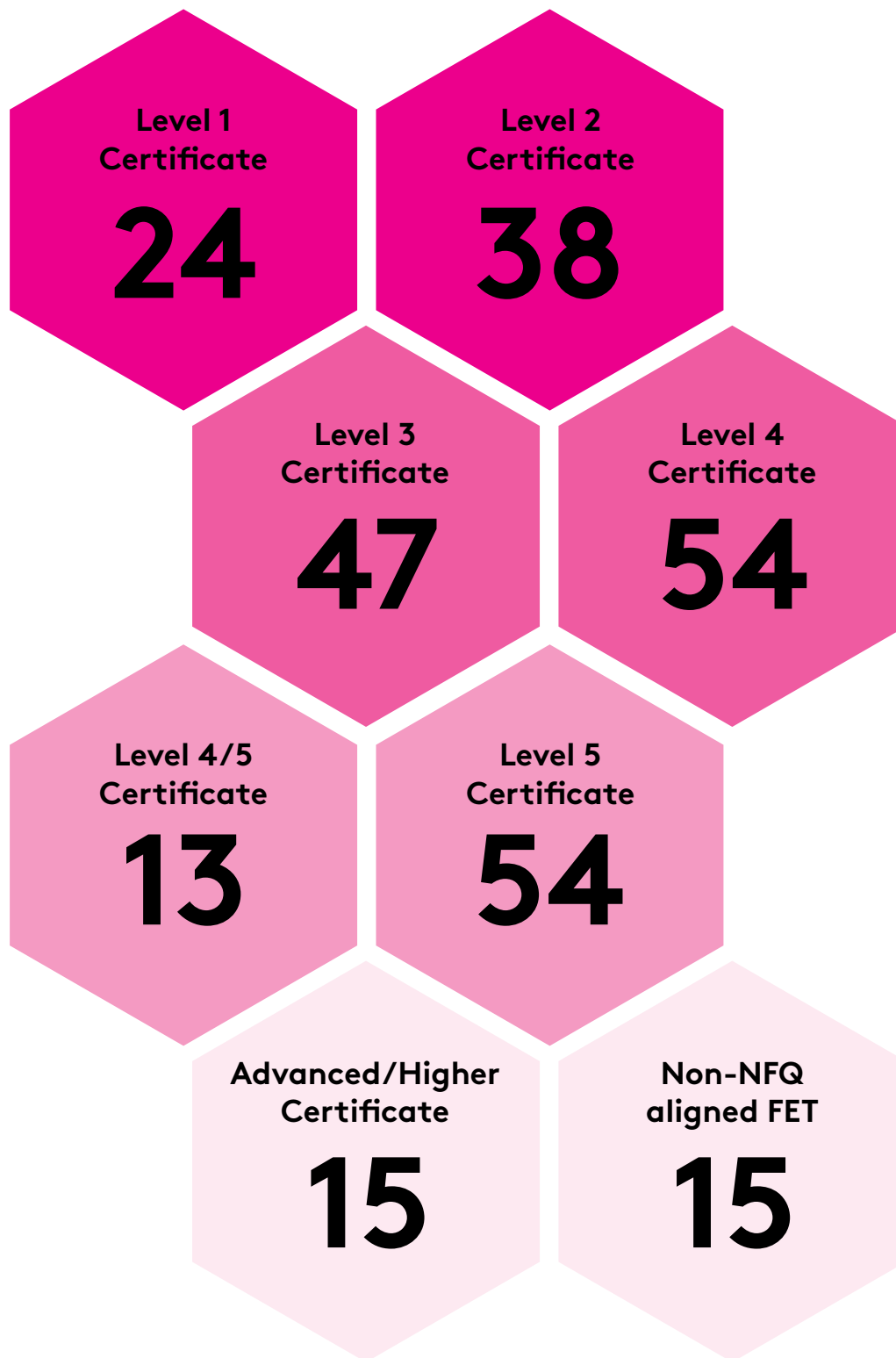
⁶ Any learner count less than 5 is excluded in this table.

Field of Study (Broad ISCED)



| Field of Study (Broad ISCED) | Examples of courses |
|--|--|
| Generic programmes and qualifications | Employability Skills |
| | ESOL English Language |
| | Health and Wellbeing |
| | Arts and Crafts |
| Business and administration and law | Start your own Business |
| | Office Administration |
| Health and welfare | Nursing Studies |
| | Applied Social Studies |
| Services | Beauty Therapy |
| | Sports, Recreation and Exercise |
| Arts and humanities | Art, Craft and Design |
| | Film and TV Production |
| Education | Early Childhood Care and Education |
| | Special Needs Assisting |
| ICT | Computer Systems and Networks |
| | Computer Basics |
| Engineering, manufacturing and construction | Welding |
| | Engineering Technology |
| Agriculture, forestry, fisheries and veterinary | Horticulture |
| | Animal Care |
| Natural sciences, mathematics and statistics | Applied Science/ Laboratory Techniques |
| | Pre-University Science |
| Social sciences, journalism and information | Journalism for the Digital Age |
| | Cultural and Heritage Studies |

Irish National Framework of Qualifications (NFQ) or Equivalent⁷



The majority of learners with Roma background were enrolled in Level 3 (18.1%), Level 4 (20.8%) and Level 5 (20.8%) courses in 2023.

⁷ This excludes learners enrolled in courses that do not lead to an award through a recognised awarding body.

Definition of Terms

Activity

The sum of learners multiplied by the number of courses which they have been enrolled in or completed within a programme or across different programmes, or providers during 2023.

Certification Rate

The sum of only full and partial learner completions that gained an award through a recognised awarding body in 2023.

Completions

Total number of learners who have a finish date of a course (regardless of whether the course is certified or not) in 2023. Completions include partial and full completers, but exclude early leavers.

Enrolments

Enrolments are defined as learners who are on course or have completed a course during 2023.

Field of Study

This is defined and categorized by the International Standard Classification of Education (ISCED). Both broad (2-digit) and detailed (4-digit) fields of study are used for categorising Further Education and Training course fields of study.

Full Completions

Learners who have completed 90 per cent or more of the course and its requirements in 2023.

Inactive

This term is used according to the Eurostat and the International Labour Organisation (ILO) definition which defines inactive as individuals who are neither employed nor unemployed and are not working and not available or looking for work. Inactive in this report includes those learners engaged in home duties, retired, student/trainees, and those inactive for other reasons.

Irish National Framework of Qualifications (NFQ)

This is a framework through which all learning achievements may be measured and related to each other in a coherent way. The many different types and sizes of qualifications included in the NFQ are organised based on their level of knowledge, skill and competence. In some cases, where awards have not been placed on the Irish NFQ, equivalent levels are assigned based on the document 'Qualifications can cross boundaries' and the level assigned to the award on the relevant country's framework (e.g. Cf. Ofqual, Scottish Credit and Qualifications Framework, etc.).

Learner

A unique individual who has progressed onto a course in the application process. The total number of learners is the sum of all unique individuals in Further Education and Training in 2023.

Long-lasting Condition

This includes anyone who has: 1) blindness or a serious vision impairment, 2) deafness or a serious hearing impairment, 3) a difficulty with basic physical activities (e.g. walking, climbing stairs, reaching, lifting or carrying, etc.), 4) an intellectual disability, 5) a difficulty with learning, remembering or concentrating, 6) a psychological or emotional condition, and/or 7) a difficulty with pain, breathing, any other chronic illness/condition.

Long-term Unemployed

This refers to any person who is unemployed for 12 months or more.

On Course

This refers to those learners who were still on course at a point in time.

Non-NFQ Aligned courses

This includes completions with certification not aligned with the NFQ.

Partial Completions

Learners who have completed more than 25 per cent but less than 90 per cent of a course and its requirements in 2023.

Post-secondary Non-tertiary

This refers to Post Leaving Certificate NFQ Level 4 or 5, Advanced Certificate NFQ Level 6, other non-NFQ aligned FET, Certificate NFQ Level 4, or Certificate NFQ Level 5.

Short-cycle Tertiary

This refers to third level non-degree courses and includes higher certificate NFQ level 6 courses and diploma NFQ level 7 courses. These courses are usually of one year in duration and are often vocational in nature.

Third Level

This refers to Ordinary Bachelor degree, Honours Bachelor degree, Professional, Post-Graduate, Doctorate or Higher degree courses.

For further information, please contact:

National FET Statistics, Data and Insights Unit, SOLAS
Block 1, Castleforbes House
Castleforbes Road, Dublin 1
nfsdi@solas.ie

[SOLAS.ie](https://www.solas.ie)