

# This is FET

## Learners with Disabilities 2022



**SOLAS**  
learning works



Co-funded by  
the European Union



Riailtas na hÉireann  
Government of Ireland

**Further  
Education  
& Training**

A Report by the  
Data Analytics Unit in SOLAS  
December 2023

### **Authors**

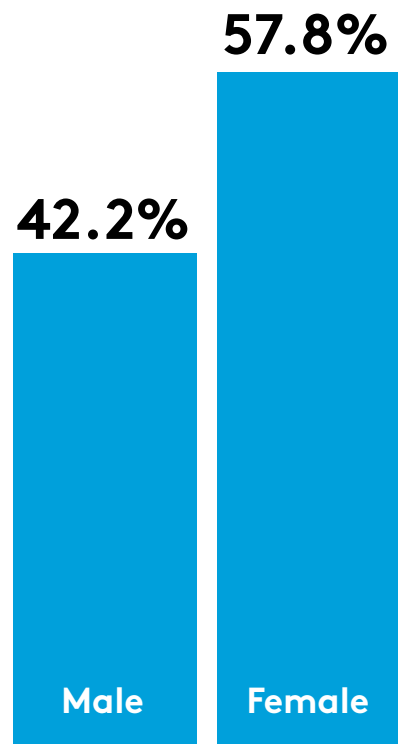
Amelia Dulee-Kinsolving  
Selen Guerin

---

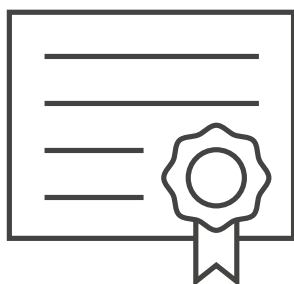
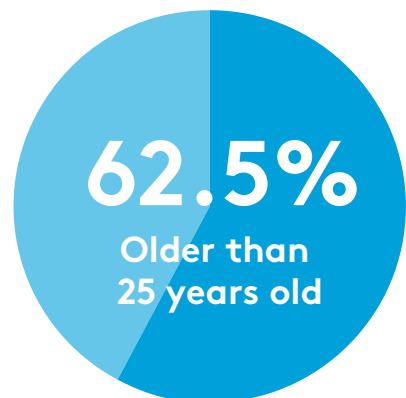
All data is sourced from the Programme and Learner Support Systems (PLSS) database. PLSS collects and processes the personal data of the FET learners who are enrolled in SOLAS funded programmes. This report excludes apprenticeship provision.

The Data Analytics Unit would like to acknowledge the assistance of the ETB staff involved in submitting data to SOLAS.

# Enrolments



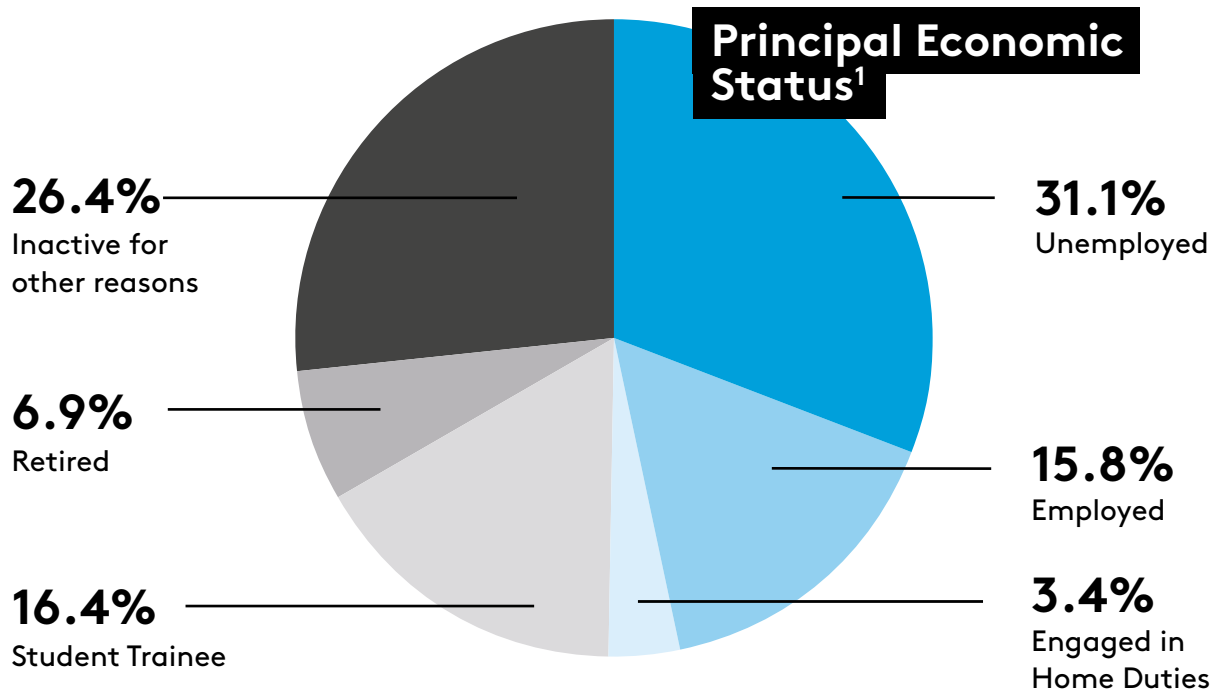
**91.6%**  
Full and partial  
completions



**61.3%**  
Certification rate

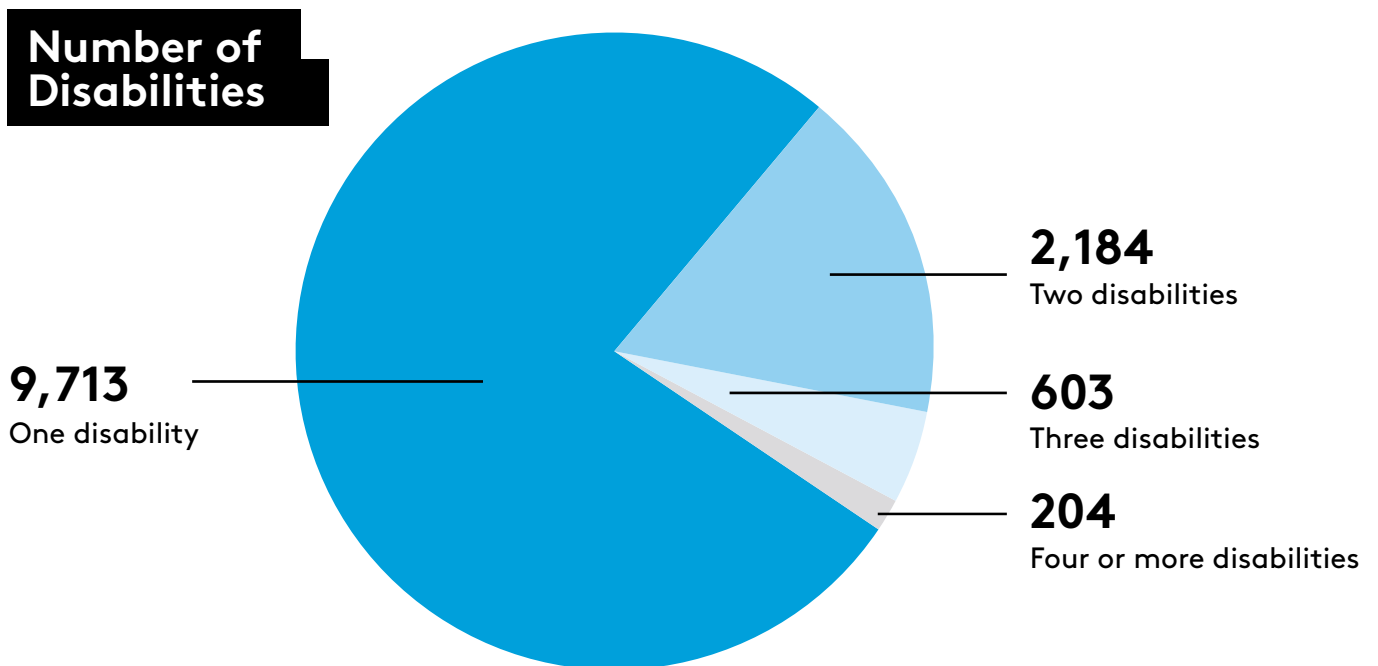
In 2022, there were 12,704 learners enrolled who reported having at least one type of disability in the further education and training programmes. This figure constitutes 6.8% of all learners enrolled in the same year. Of the learner enrolments that reported a disability, 42.2% were men and 57.8% were women. The majority (62.5%) of these learners were older than 25 years of age.

There were also 91.6% of learners that reported a disability who partially or fully completed a course in 2022. The certification rate for those learners who reported a disability and completed certified courses was 61.3% in 2022, up from 52.1% in 2021.



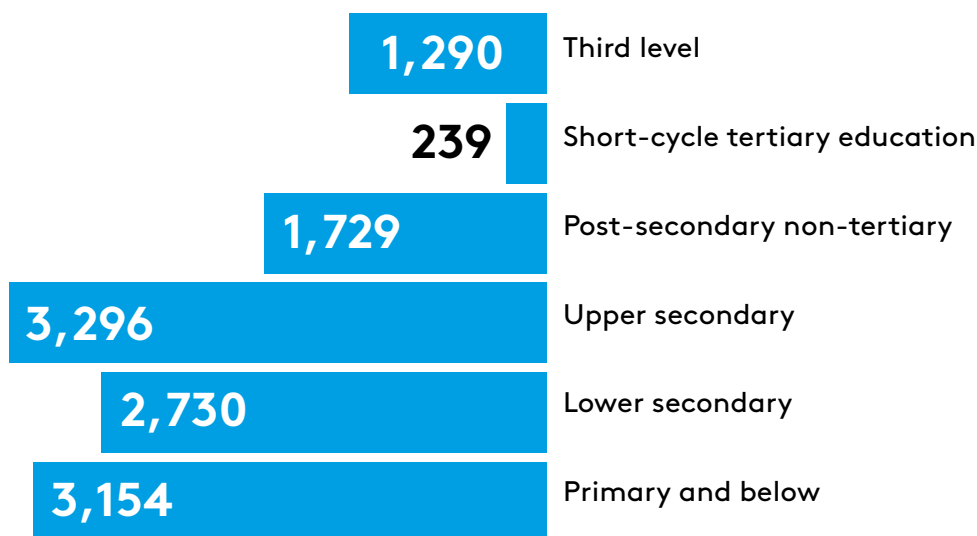
The majority of learners that reported a disability were either unemployed or economically inactive.

The chart below indicates that 9,713 learners reported one type of disability, 2,184 learners reported two, and 807 reported three or more.



<sup>1</sup> It should be noted that this includes only those cases where previous principal economic status was captured.

## Highest Level of Formal Education<sup>2</sup>

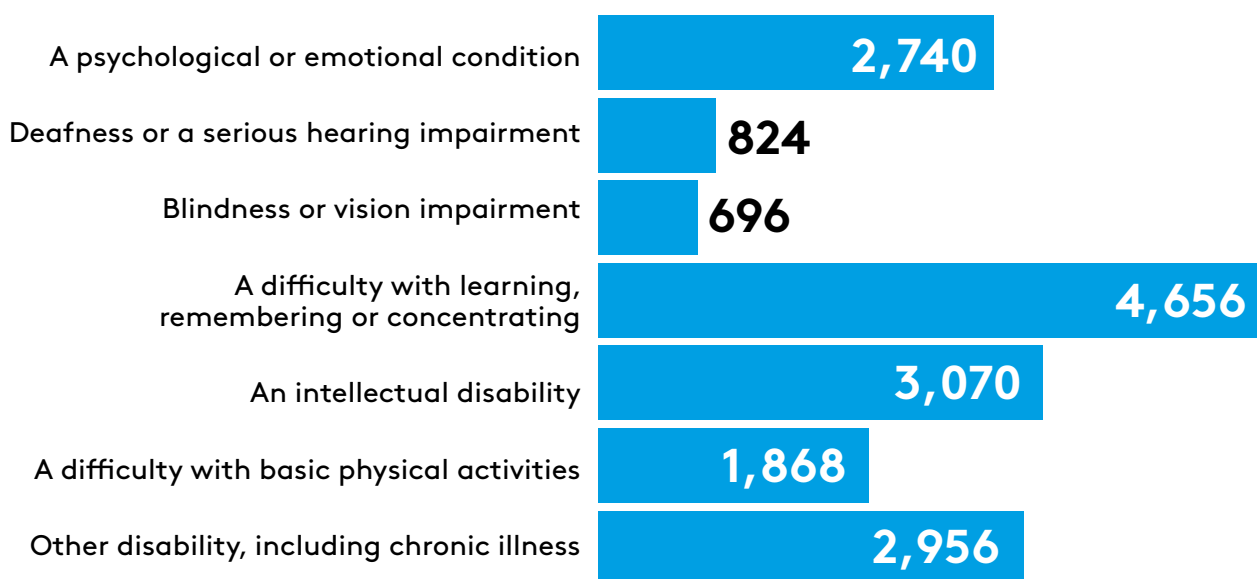


Note: This calculation is an estimate and excludes non-responses

Approximately 47.3% percent of the learners had lower secondary or a lower level education attained prior to joining further education and training.

The chart below indicates that 4,656 (37%) of learners reported difficulty with learning, remembering or concentrating, 2,956 (23.3%) another type of disability, including chronic illness, and 3,070 (23%) an intellectual disability.

## Total Number of Learners by Type of Disability<sup>3</sup>



Note: Learners here are unique within each type of disability but not necessarily across disabilities.

<sup>2</sup> It should be noted that this figure is an estimate and includes only those cases where previous levels of education were captured.

<sup>3</sup> Learners here are unique within each type of disability but not necessarily across disabilities.

# ETB<sup>4</sup>

ETB	Learners
Cavan and Monaghan ETB	530
City of Dublin ETB	1,690
Cork ETB	648
Donegal ETB	389
Dublin and Dun Laoghaire ETB	1,727
Galway and Roscommon ETB	472
Kerry ETB	427
Kildare and Wicklow ETB	560
Kilkenny and Carlow ETB	627
Laois and Offaly ETB	766
Limerick Clare ETB	412
Longford and Westmeath ETB	622
Louth and Meath ETB	1,119
Mayo, Sligo and Leitrim ETB	812
Tipperary ETB	721
VSCSS	48
Waterford and Wexford ETB	1,219

Of the 12,704 learners that reported a disability, 1,727 (14%) were enrolled in the Dublin and Dun Laoghaire ETB. This figure was followed by 1,690 who were enrolled in the City of Dublin ETB, representing 13.3% of learners that reported at least one disability.

---

<sup>4</sup> Learners here are unique within ETBs but not necessarily across ETBs.

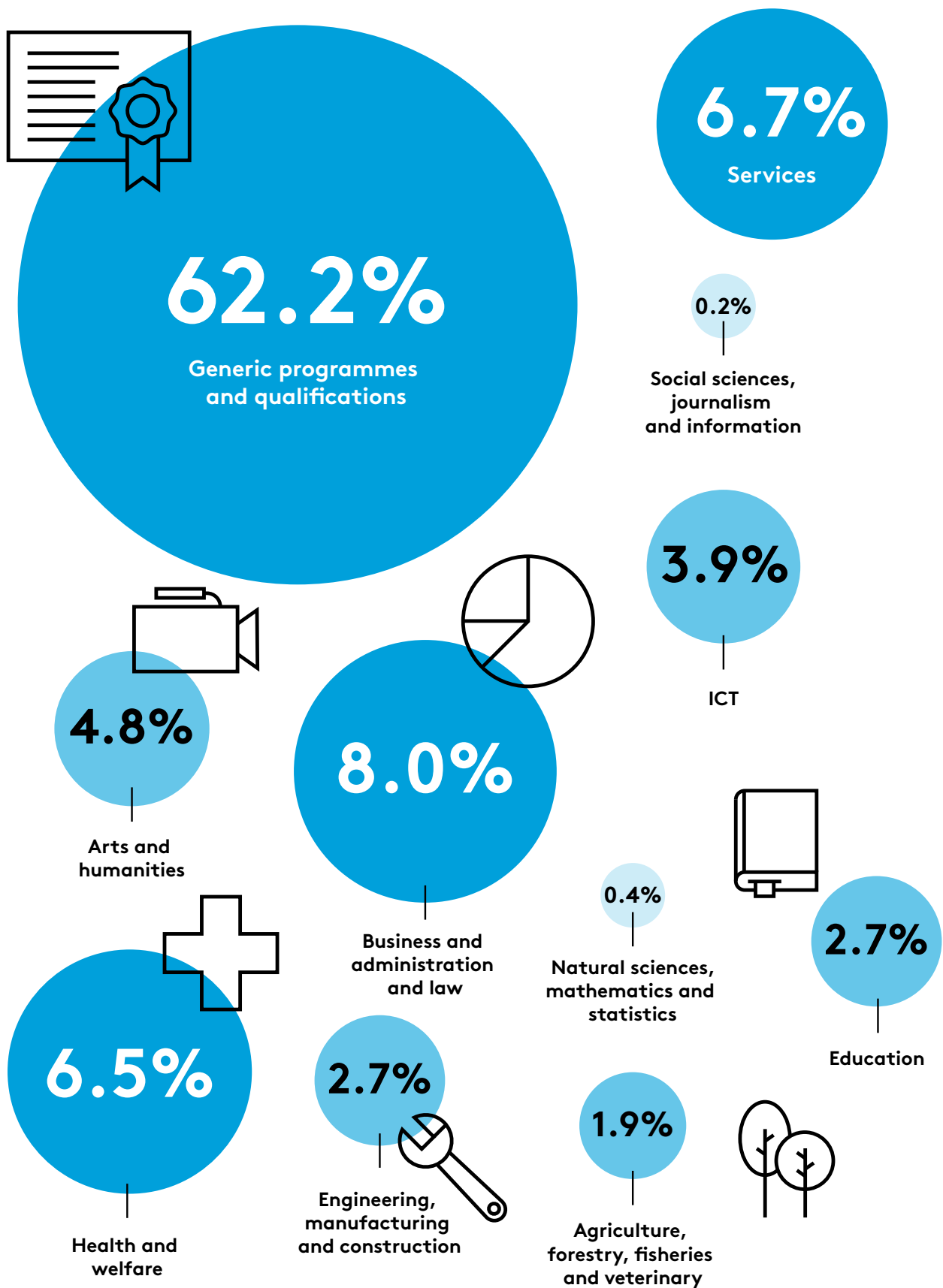
# Programme Category<sup>5</sup>

ETB	Learners
Bridging Foundation Training	33
Community Training Centres	374
Specific Skills Training	354
Traineeship Training	223
Local Training Initiatives	246
Specialist Training Providers	975
VTOS Core	320
Youthreach	767
Justice Workshop	13
Blended Training	17
PLC	1,964
Traineeship Employed	48
Evening Training	343
BTEI Groups	1,472
Adult Literacy Tuition	2,818
ITABE	197
Voluntary Literacy Tuition	28
FET Cooperation Hours	455
Community Education	2,663
Skills for Work	56
ESOL	529
Refugee Resettlement	23
Other Funding	51
Skills to Advance	232

Among FET programmes, enrolments were primarily concentrated among Adult Literacy, Community Education, and PLC programmes.

<sup>5</sup> Learners here are unique within programmes but not necessarily across programmes.

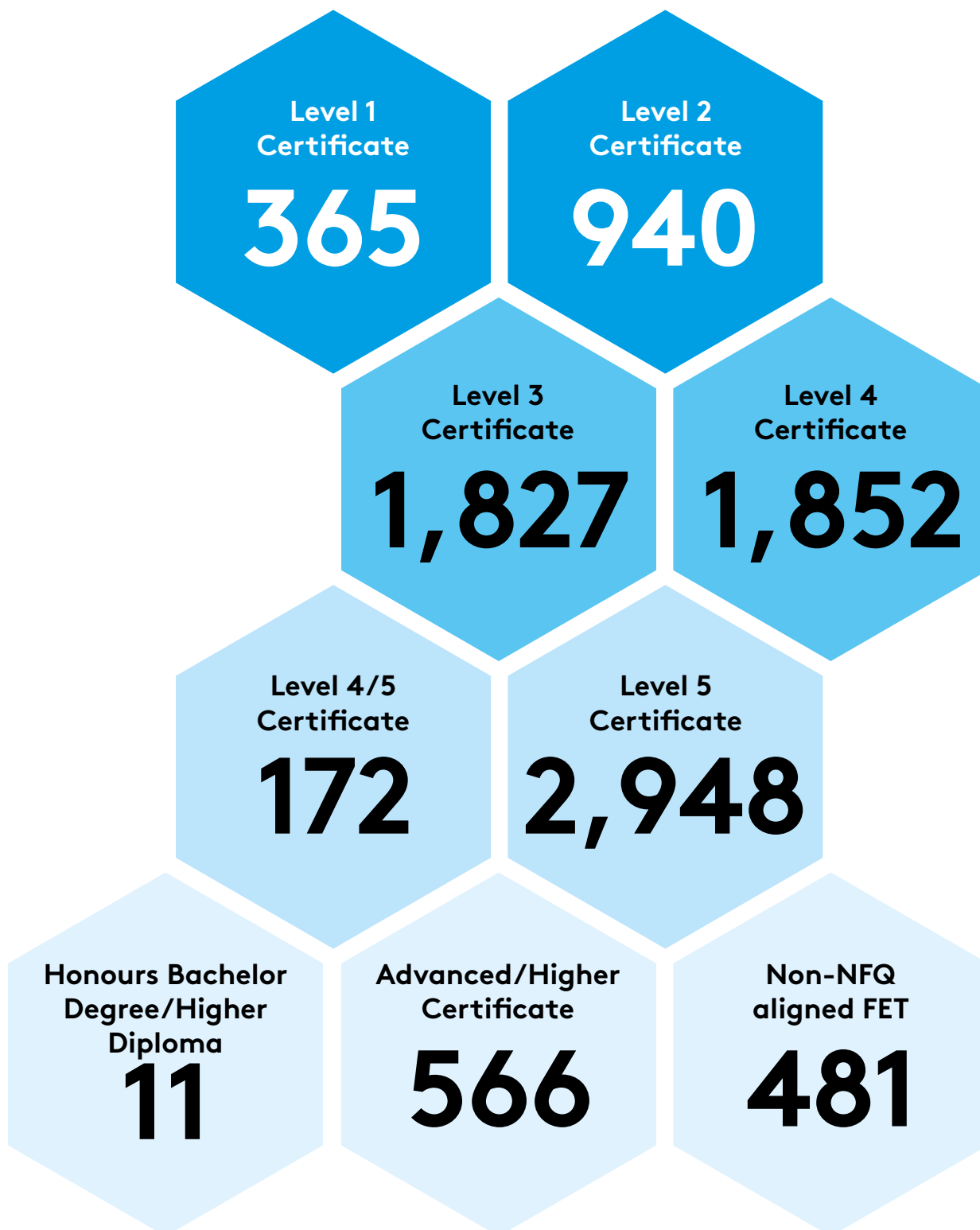
# Field of Study (Broad ISCED)





<b>Field of Study (Broad ISCED)</b>	<b>Examples of courses</b>
<b>Generic programmes and qualifications</b>	Employability Skills
	ESOL English Language
	Health and Wellbeing
	Arts and Crafts
<b>Business and administration and law</b>	Start your own Business
	Office Administration
<b>Health and welfare</b>	Nursing Studies
	Applied Social Studies
<b>Services</b>	Beauty Therapy
	Sports, Recreation and Exercise
<b>Arts and humanities</b>	Art, Craft and Design
	Film and TV Production
<b>Education</b>	Early Childhood Care and Education
	Special Needs Assisting
<b>ICT</b>	Computer Systems and Networks
	Computer Basics
<b>Engineering, manufacturing and construction</b>	Welding
	Engineering Technology
<b>Agriculture, forestry, fisheries and veterinary</b>	Horticulture
	Animal Care
<b>Natural sciences, mathematics and statistics</b>	Applied Science/ Laboratory Techniques
	Pre-University Science
<b>Social sciences, journalism and information</b>	Journalism for the Digital Age
	Cultural and Heritage Studies

# Irish National Framework of Qualifications (NFQ) or Equivalent<sup>5</sup>



<sup>5</sup> This excludes learners enrolled in courses that do not lead to an award through a recognised awarding body.

# Definition of Terms

## **Certification Rate**

The sum of only full and partial learner completions that gained an award through a recognised awarding body in 2022.

## **Completions**

Completions include partial and full completers, but exclude early leavers.

## **Enrolments**

Enrolments are defined as learners who are on course or have completed a course during 2022.

## **Field of Study**

This is defined and categorised by the International Standard Classification of Education (ISCED). In this report, only broad (2-digit) fields of study are used for categorising Further Education and Training courses.

## **Full Completions**

Learners who have completed 90 per cent or more of the course and its requirements in 2022.

## **Irish National Framework of Qualifications (NFQ)**

This is a framework through which all learning achievements may be measured and related to each other in a coherent way. The many different types and sizes of qualifications included in the NFQ are organised based on their level of knowledge, skill and competence. In some cases, where awards have not been placed on the Irish NFQ, equivalent levels are assigned based on the document 'Qualifications can cross boundaries' and the level assigned to the award on the relevant country's framework (e.g. Cf. Ofqual, Scottish Credit and Qualifications Framework, etc.).

## **Learner**

A unique individual who has progressed onto a course in the application process. The total number of learners is the sum of all unique individuals in Further Education and Training in 2022.

## **Non-NFQ Aligned courses**

This includes completions with certification not aligned with the NFQ.

## **On Course**

This refers to those learners who were still on course as of December 31st, 2022.

**Partial Completions**

Learners who have completed more than 25 per cent but less than 90 per cent of a course and its requirements in 2022.

**Post-secondary non-tertiary**

This refers to Post Leaving Certificate NFQ Level 4 or 5, Advanced Certificate NFQ Level 6, other non-NFQ aligned FET, Certificate NFQ Level 4, or Certificate NFQ Level 5.

**Short-cycle tertiary education**

This refers to third level non-degree courses and includes higher certificate NFQ level 6 courses and diploma NFQ level 7 courses. These courses are usually of one year in duration and are often vocational in nature.

**Third Level**

This refers to Ordinary Bachelor degree, Honours Bachelor degree, Professional, Post-Graduate, Doctorate or Higher degree courses.



**For further information, please contact:**

**Helen Garner  
Data Analytics Unit, SOLAS  
Block 1, Castleforbes House  
Castleforbes Road, Dublin 1  
[helen.garner@solas.ie](mailto:helen.garner@solas.ie)**

**SOLAS.ie**