

FET in Numbers 2018

Learners with Disabilities



A Report by the
Data Analytics Unit in SOLAS
September 2019

Authors

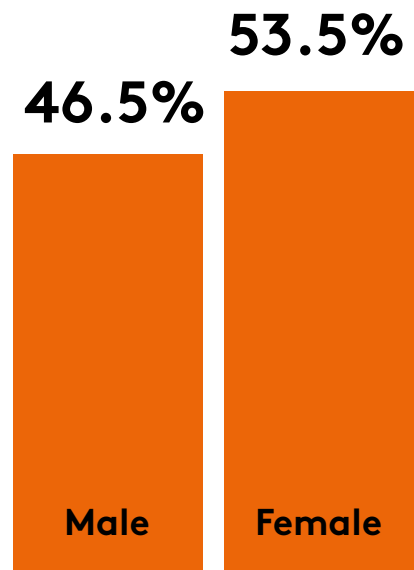
Amelia Dulee-Kinsolving
Selen Guerin

All data is sourced from the Programme and Learner Support Systems (PLSS) database. PLSS collects and processes the personal data of the FET learners who are enrolled in SOLAS funded programmes. Please note that apprenticeship and eCollege data are currently not included in the PLSS database.

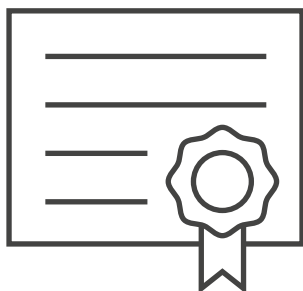
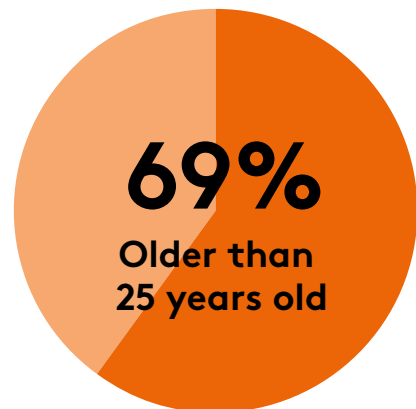
The Data Analytics Unit would like to acknowledge the assistance of the ETB staff involved in submitting data to SOLAS.



Enrolments



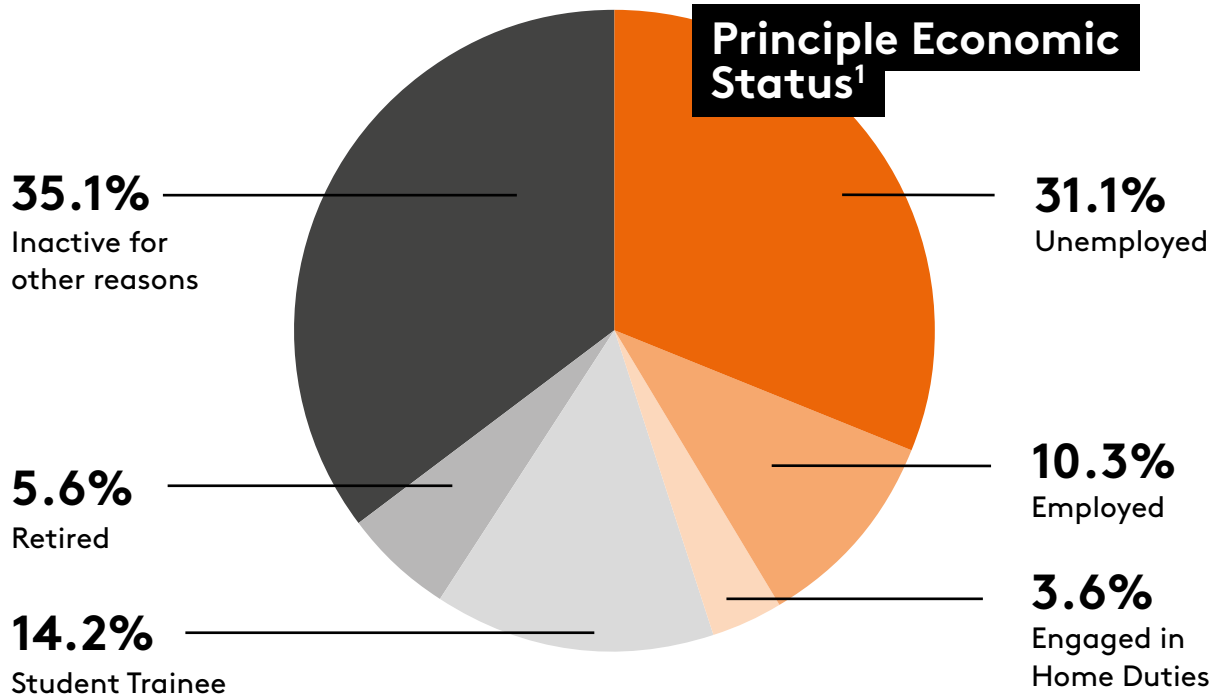
92.4%
Full and partial
completions



56.4%
Certification rate

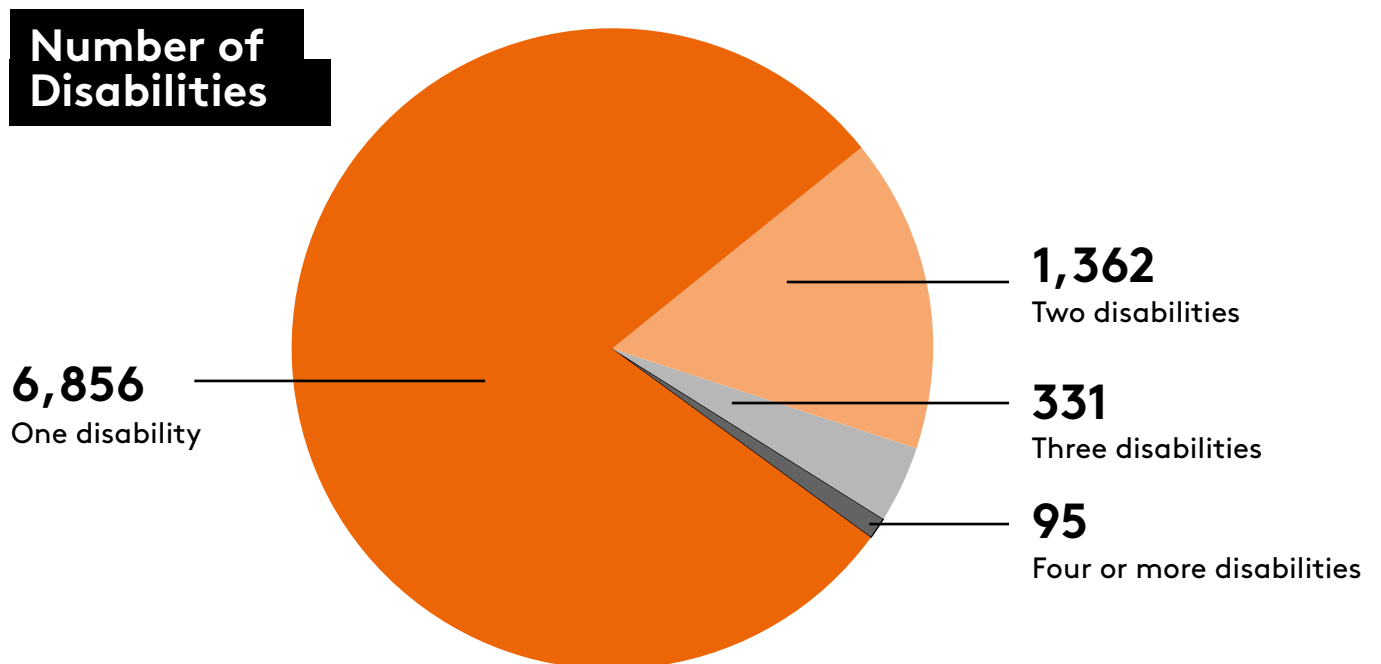
In 2018, there were 8,644 learners enrolled who reported having at least one type of disability in the further education and training programmes. This figure constitutes 5% of all learners enrolled in the same year. Of the learner enrolments that reported a disability, 46.5% were men and 53.5% were women. The majority (69%) of these learners were older than 25 years of age.

There were also 92.4% of learners that reported a disability who partially or fully completed a course in 2018. The certification rate for those learners who reported a disability and completed certified courses was 56.4%.



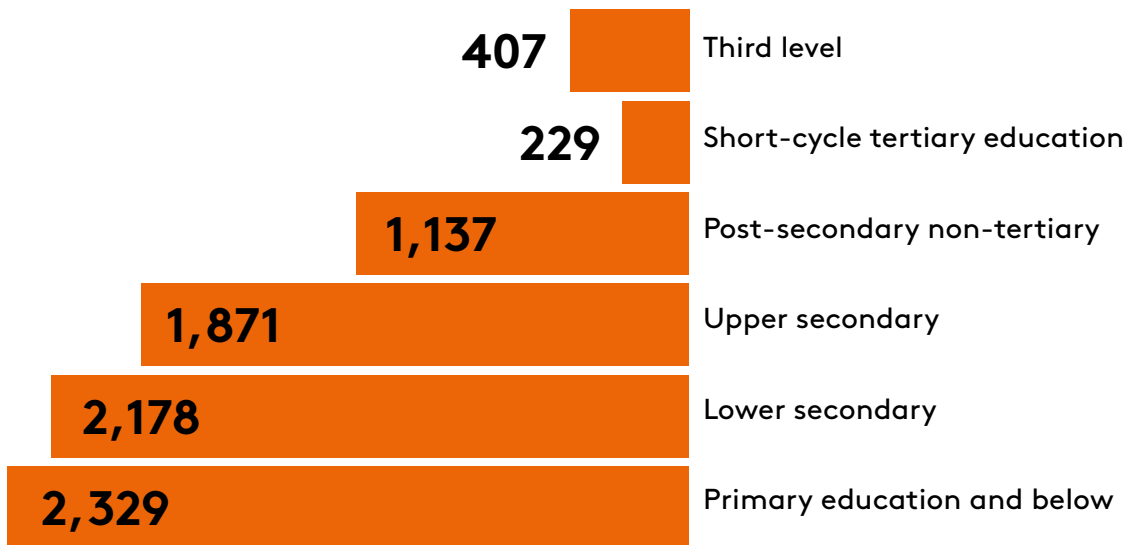
The majority of learners that reported a disability were either unemployed or economically inactive.

The chart below indicates that 6,856 learners reported one type of disability, 1,362 learners reported two, and 426 reported three or more.



¹ It should be noted that this includes only those cases where previous principle economic status was captured.

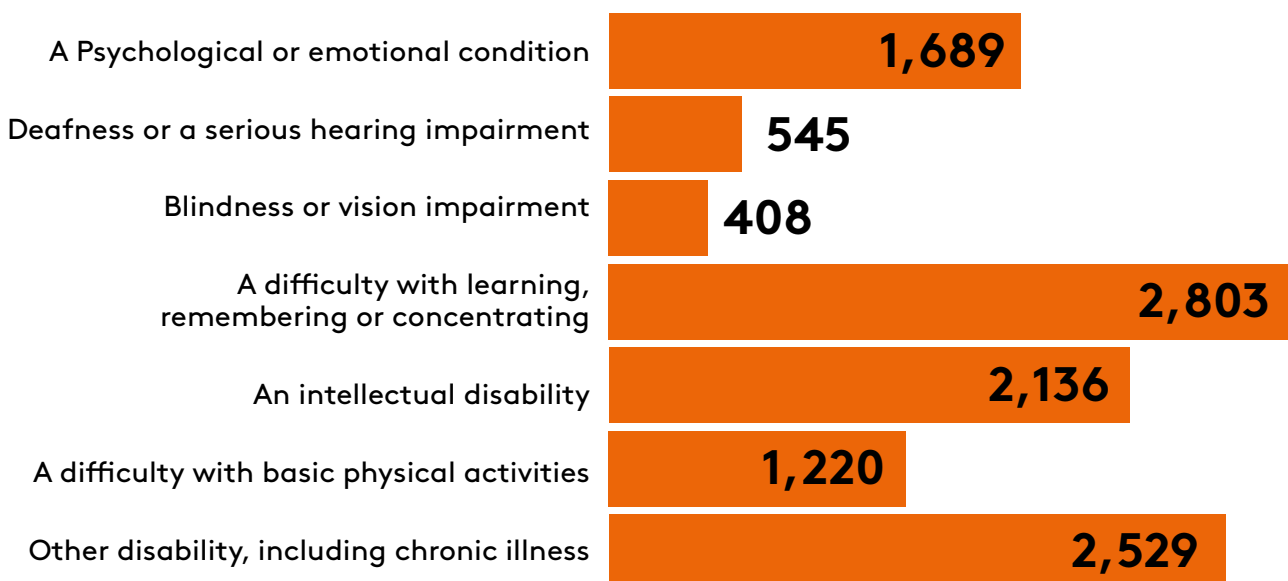
Highest Level of Formal Education²



Approximately 55.3% percent of the learners had lower secondary or a lower level education attained prior to joining further education and training.

The chart below indicates that 2,803 (32.4%) of learners reported difficulty with learning, remembering or concentrating, 2,529 (29.3%) another type of disability, including chronic illness, and 2,136 (24.7%) an intellectual disability.

Total Number of Learners by Type of Disability³



² It should be noted that this figure is an estimate and includes only those cases where previous levels of education were captured.

³ Learners here are unique within each type of disability but not necessarily across disabilities.

ETB

ETB	Learners
Cavan and Monaghan ETB	461
City of Dublin ETB	1,415
Cork ETB	395
Donegal ETB	284
Dublin and Dun Laoghaire ETB	267
Galway and Roscommon ETB	267
Kerry ETB	373
Kildare and Wicklow ETB	433
Kilkenny and Carlow ETB	272
Laois and Offaly ETB	607
Limerick Clare ETB	617
Longford and Westmeath ETB	469
Louth and Meath ETB	766
Mayo, Sligo and Leitrim ETB	477
Tipperary ETB	504
VSCSS	69
Waterford and Wexford ETB	967
Total	8,644

Of the 8,644 learners that reported a disability, 1,415 (16.4%) were enrolled in the City of Dublin ETB. This figure was followed by 967 who were enrolled in Waterford and Wexford ETB, representing 11% of learners that reported at least one disability.

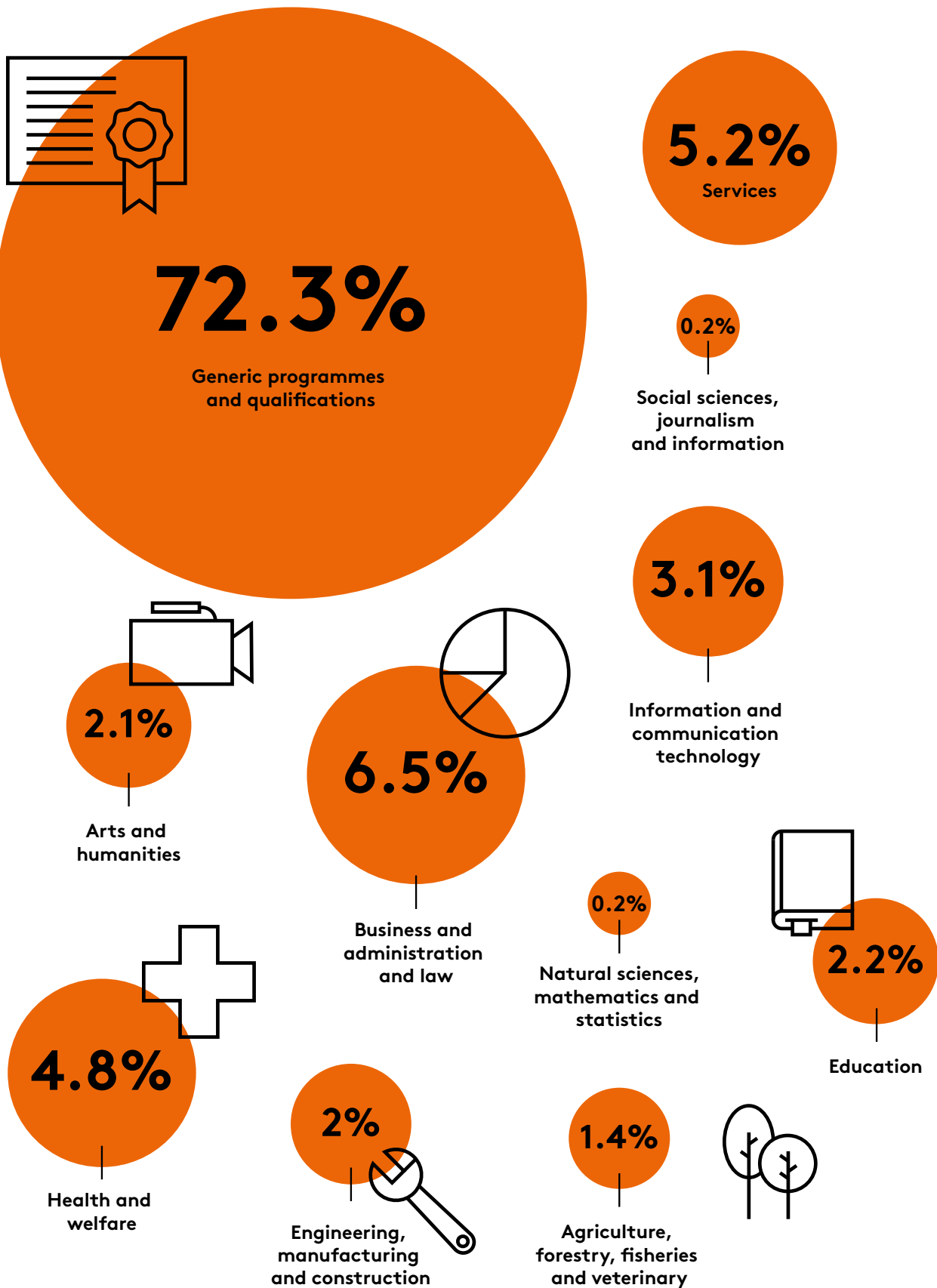
Programme Category⁴

Programme Category	Learners
Bridging Foundation Training	21
Community Training Centres	244
Specific Skills Training	223
Traineeship Training	164
Local Training Initiatives	225
Specialist Training Providers	595
VTOS Core	244
Youthreach	598
Justice Workshop	3
Blended Training	9
PLC	626
Traineeship Employed	1
Evening Training	164
BTEI Groups	1367
Adult Literacy Tuition	2588
ITABE	220
Voluntary Literacy Tuition	67
FET Cooperation Hours	250
Community Education	1707
Skills for Work	41
ESOL	230
Refugee Resettlement	24
Other Funding	37
Recognition of Prior Learning	2

Among FET programmes, enrolments were primarily concentrated among Adult Literacy, Community Education, and Back to Education Initiative (BTEI) programmes.

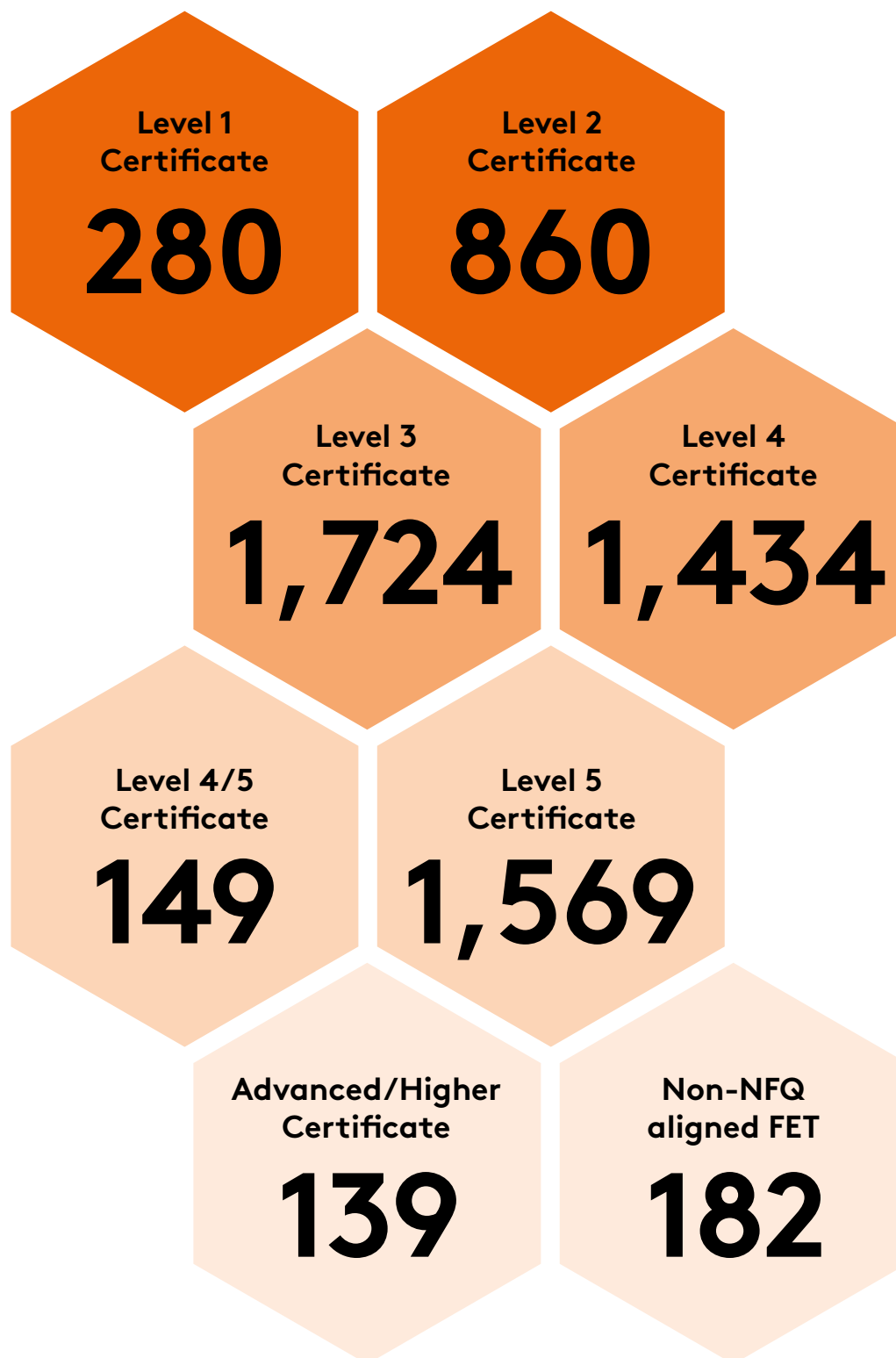
⁴ Learners here are unique within programmes but not necessarily across programmes.

Field of Study (Broad ISCED)



Field of Study (Broad ISCED)	Examples of courses
Generic programmes and qualifications	Employability Skills
	ESOL English Language
	Health and Wellbeing
	Arts and Crafts
Business and administration and law	Start your own Business
	Office Administration
Health and welfare	Nursing Studies
	Applied Social Studies
Services	Beauty Therapy
	Sports, Recreation and Exercise
Arts and humanities	Art, Craft and Design
	Film and TV Production
Education	Early Childhood Care and Education
	Special Needs Assisting
ICT	Computer Systems and Networks
	Computer Basics
Engineering, manufacturing and construction	Welding
	Engineering Technology
Agriculture, forestry, fisheries and veterinary	Horticulture
	Animal Care
Natural sciences, mathematics and statistics	Applied Science/ Laboratory Techniques
	Pre-University Science
Social sciences, journalism and information	Journalism for the Digital Age
	Cultural and Heritage Studies

Irish National Framework of Qualifications (NFQ) or Equivalent⁵



⁵ This excludes learners enrolled in courses that do not lead to an award through a recognised awarding body.

Definition of Terms

Certification Rate

The sum of only full and partial learner completions that gained an award through a recognised awarding body in 2018.

Completions

Total number of learners who have a finish date of a course (regardless of whether the course is certified or not) in 2018. Completions include partial and full completers, but exclude early leavers.

Enrolments

Enrolments are defined as learners who are on course or have completed a course during 2018.

Field of Study

This is defined and categorised by the International Standard Classification of Education (ISCED). In this report, only broad (2-digit) fields of study are used for categorising Further Education and Training courses.

Partial Completions

Learners who have completed more than 25 per cent but less than 90 per cent of a course and its requirements in 2018.

Irish National Framework of Qualifications (NFQ)

This is a framework through which all learning achievements may be measured and related to each other in a coherent way. The many different types and sizes of qualifications included in the NFQ are organised based on their level of knowledge, skill and competence. In some cases, where awards have not been placed on the Irish NFQ, equivalent levels are assigned based on the document 'Qualifications can cross boundaries' and the level assigned to the award on the relevant country's framework (e.g. Cf. Ofqual, Scottish Credit and Qualifications Framework, etc.).

Non-NFQ Aligned courses

This includes completions with certification not aligned with the NFQ.

Learner

A unique individual who has progressed onto a course in the application process. The total number of learners is the sum of all unique individuals in Further Education and Training in 2018.

On Course

This refers to those learners who were still on course as of December 31st, 2018.

Full Completions

Learners who have completed 90 per cent or more of the course and its requirements in 2018.

Post-secondary non-tertiary

This refers to Post Leaving Certificate NFQ Level 4 or 5, Advanced Certificate NFQ Level 6, other non-NFQ aligned FET, Certificate NFQ Level 4, or Certificate NFQ Level 5.

Short-cycle tertiary education

This refers to third level non-degree courses and includes higher certificate NFQ level 6 courses and diploma NFQ level 7 courses. These courses are usually of one year in duration and are often vocational in nature.

Third Level

This refers to Ordinary Bachelor degree, Honours Bachelor degree, Professional, Post-Graduate, Doctorate or Higher degree courses.



For further information, please contact:

Helen Garner
Data Analytics Unit, SOLAS
Block 1, Castleforbes House
Castleforbes Road, Dublin 1
helen.garner@solas.ie

SOLAS.ie