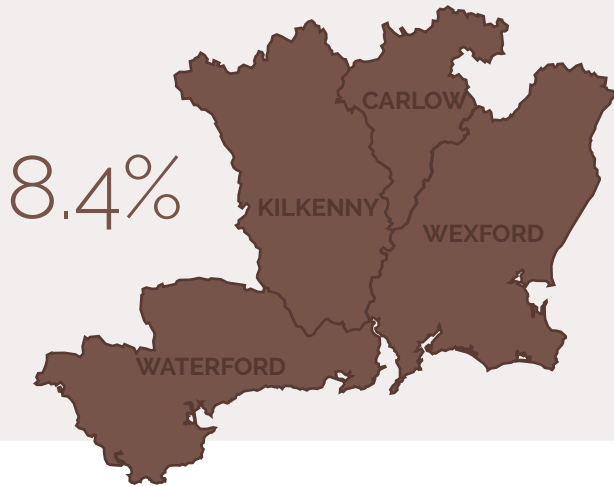


Employment

The South East accounts for 8.4% of employment in Ireland (192,600 persons)

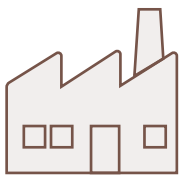


Top 5 Sectors	Total employed	Q1-Q3 2020
Industry	33,500	+24% ▲
Wholesale & retail	26,000	-6% ▼
Health	22,100	-10% ▼
Education	16,600	+14% ▲
Accommodation & food	14,800	-1% ▼

Impact of COVID-19 on the South East region

(from Q1 2020 to Q3 2020)

Employment



↓ 1.7%
Employment fell by 3,300 persons (1.7%)



Males accounted for three quarters of the fall in employment, with a decline of 2,500 persons (or 2.3%)

Work Force



59.5%
The labour force participation rate decreased from 60.2% in Q1 to 59.5% in Q3

Agriculture



↓ 28%
The agriculture sector saw the largest absolute decline in employment (4,400 persons or a 28% decrease)

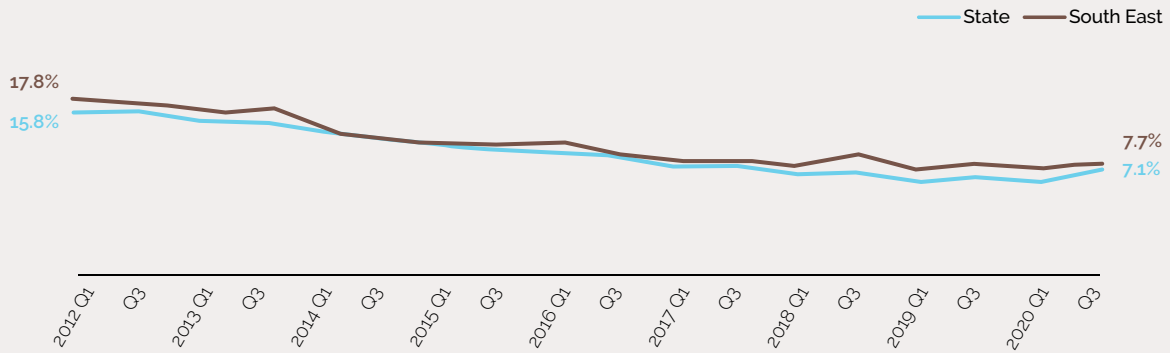
Sector Focus

Selected top manufacturing companies in the South East region

Waters Technologies
Teva Pharmaceuticals **Bausch & Lomb**
Carta mundi Irish Country Meats
 Slaney Foods Group **Glanbia**
Radley Engineering **Clear Stream Technologies**
Lake Region Medical Honeywolf Turbo Technologies
GSK

Unemployment

Unemployment rate %



Numbers unemployed Q3 2020

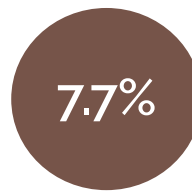


Change from Q1-Q3 2020 UE Number



Increase of 1,900 persons unemployed

UE Rate Q3 2020



Change from Q1-Q3 2020 UE Rate



Increase of 1.0 percentage point

Region rates – Overall comments



South East region had **the second highest** UE rate (7.7%) after Dublin (8.2%)

South East had the **lowest increase in UE rate** between Q1 2020 and Q3 2020 across all regions (one percentage point)

Pandemic Unemployment Payments - Week 44

Persons receiving Pandemic Unemployment Payment in the **South East** region:

- **26,300 persons**, compared to 53,300 in May 2020 (Week 18)
- Accounting for **13.7% of the labour force*** in the region (14.4% overall in the State)
- 25.8% (or 6,800 persons) **aged under 25 years** (25.3% for the State)
- **54.1% female** (50.4% for the State)

* based on Quarter 3 2020

Companies with recent job announcements in the South East region

Company	No. of Jobs
Entegro	50
UPMC	60
CSC Financial	75
Trilateral Research	40
Unum	50
MTech	25

