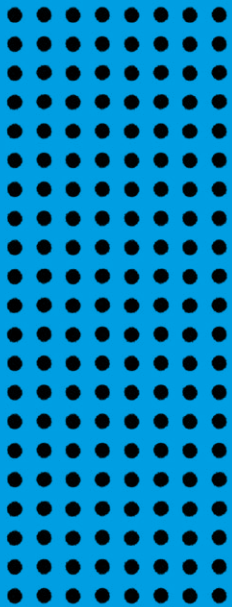


FET in Numbers 2018

Traveller Community



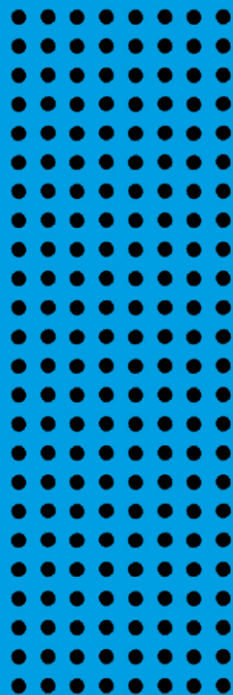
A Report by the
Data Analytics Unit in SOLAS
September 2019

Authors

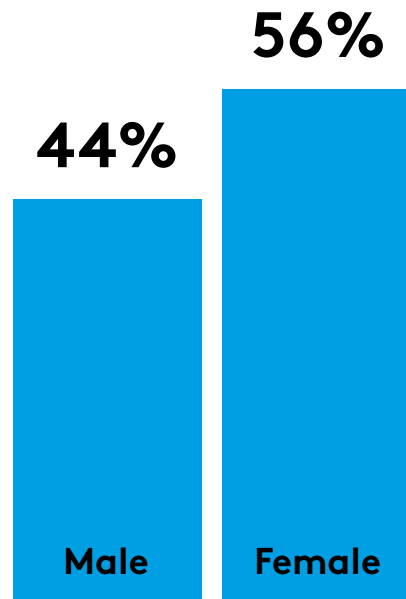
Amelia Dulee-Kinsolving
Selen Guerin

All data is sourced from the Programme and Learner Support Systems (PLSS) database. PLSS collects and processes the personal data of the FET learners who are enrolled in SOLAS funded programmes. Please note that apprenticeship and eCollege data are currently not included in the PLSS database.

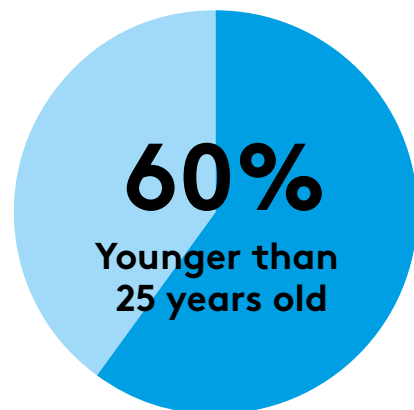
The Data Analytics Unit would like to acknowledge the assistance of the ETB staff involved in submitting data to SOLAS.



Enrolments



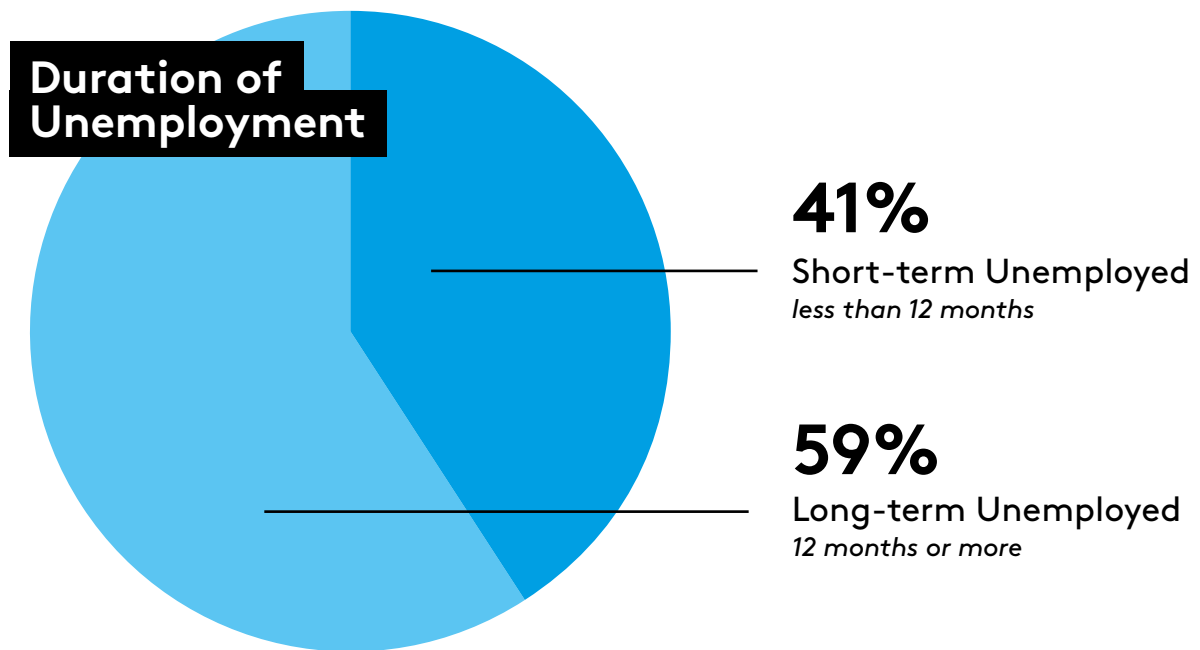
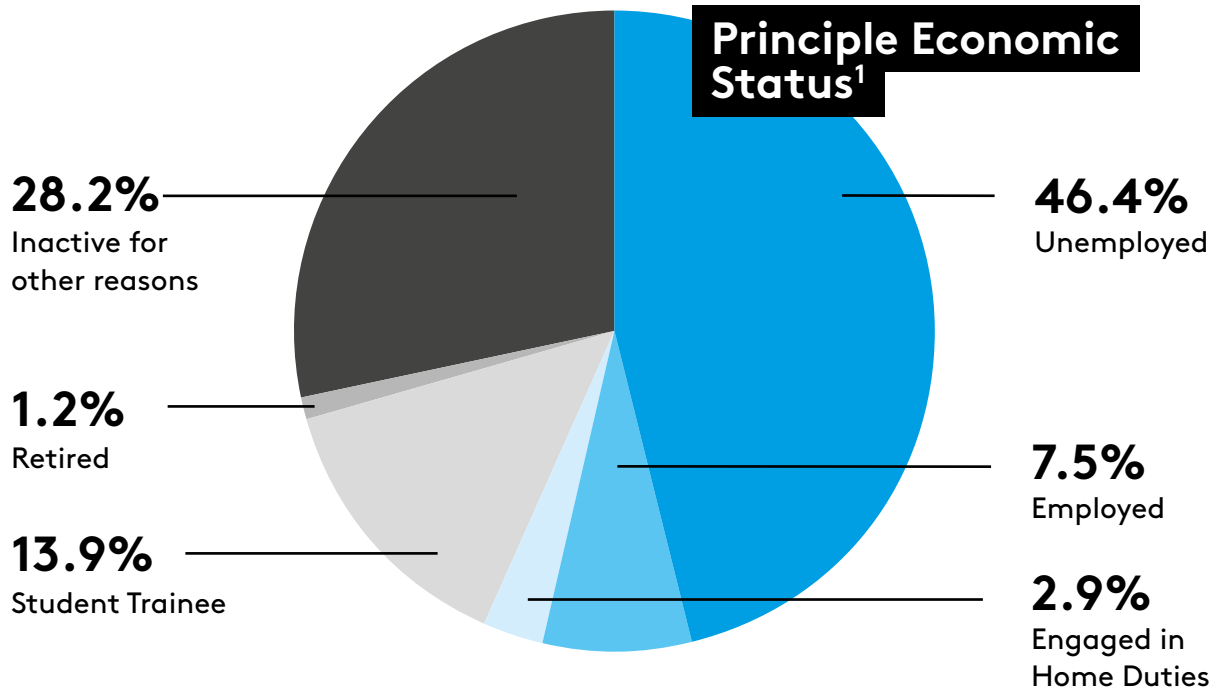
87%
Full and partial
completions



59.4%
Certification rate

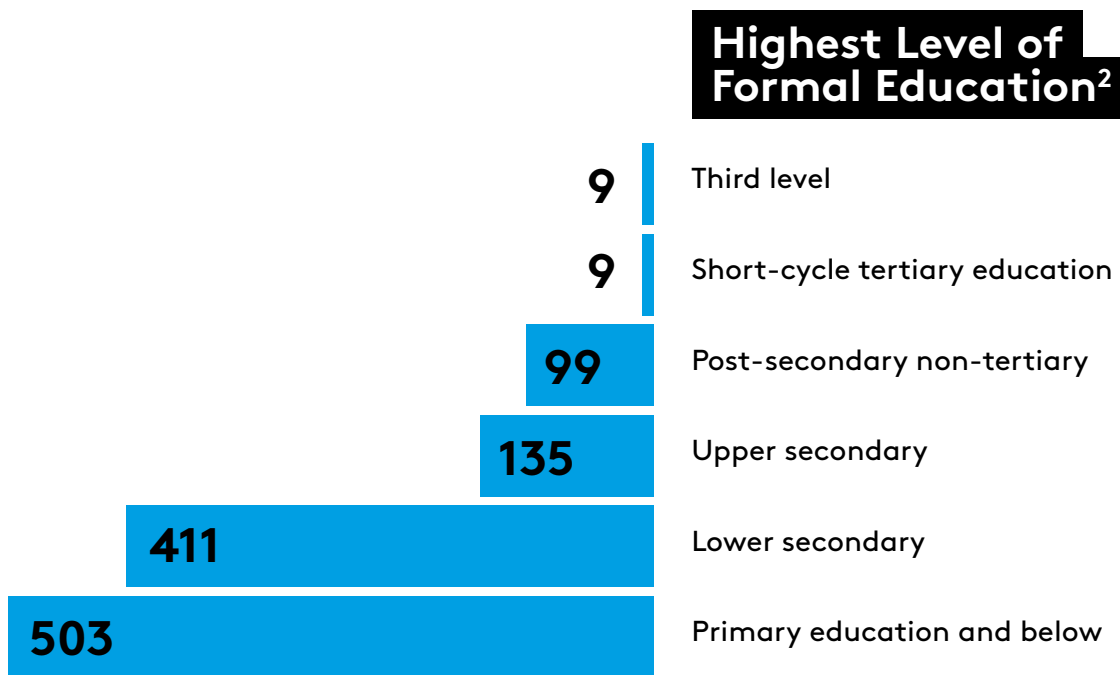
In 2018, the total number of Traveller enrolments reported in further education and training was 1,212. Of these learner enrolments, 44% were men and 56% were women. The majority (60%) of these learners were younger than 25 years of age.

Of the 1,212 Traveller enrolments, 87% partially or fully completed a course in 2018. The certification rate for travellers who completed certified courses was 59.4%.

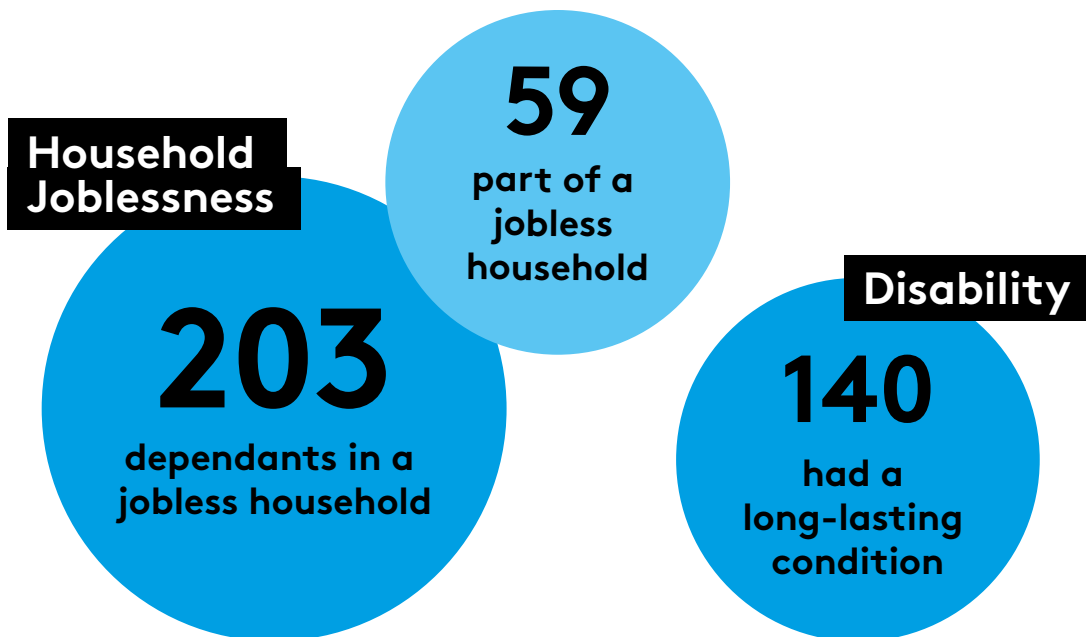


The majority of Travellers were either unemployed or economically inactive. Of those who were unemployed, 59% were unemployed for 12 months or more.

¹ It should be noted that this figure is an estimate and includes only those cases where previous principle economic status was captured. The Principle Economic Status response rate for Travellers was 93%.



Approximately two-thirds (914) of Travellers reported that they had a lower secondary or primary education and below education level attained prior to joining further education and training.



Of the 1,212 Traveller enrolments, 59 reported that they were part of a jobless household, whereas 203 reported that they were dependants in a jobless household. There were also 140 Travellers that reported they had a long-lasting condition.

² It should be noted that this figure is an estimate and includes only those cases where previous levels of education were captured.

ETB

ETB	Learners
Cavan and Monaghan ETB	75
City of Dublin ETB	90
Cork ETB	49
Donegal ETB	44
Dublin and Dun Laoghaire ETB	47
Galway and Roscommon ETB	66
Kerry ETB	38
Kildare and Wicklow ETB	33
Kilkenny and Carlow ETB	56
Laois and Offaly ETB	141
Limerick Clare ETB	105
Longford and Westmeath ETB	76
Louth and Meath ETB	93
Mayo, Sligo and Leitrim ETB	84
Tipperary ETB	67
VSCSS	14
Waterford and Wexford ETB	134
Total	1,212

Of the 1,212 Travellers enrolled in FET courses, Traveller enrolments were primarily concentrated in Laois and Offaly ETB, Waterford and Wexford ETB, and Limerick and Clare ETB.

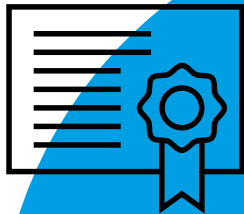
Programme Category³

Programme Category	Learners
Adult Literacy Groups	350
BTEI Groups	132
Bridging and Foundation Training	4
Community Education	141
Community Training Centres	127
ESOL	1
Evening Training	25
FET Cooperation Hours	40
ITABE	42
Justice Workshop	4
Local Training Initiatives	85
Other Funding	6
PLC	52
Skills for Work	2
Specialist Training Providers	12
Specific Skills Training	50
Traineeship Training	23
VTOS Core	23
Voluntary Literacy Tuition	15
Youthreach	324

Among FET programmes, Traveller enrolments were primarily concentrated among Adult Literacy and Youthreach courses.

³ Learners here are unique within programmes, but not necessarily across programmes.

Field of Study (Broad ISCED)

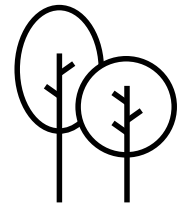


77.1%

Generic programmes
and qualifications

1%

Agriculture,
forestry, fisheries
and veterinary



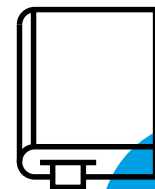
2.9%

Health and
welfare



2%

ICT



2.3%

Education

7.2%

Services



4%

Business and
administration
and law

0.6%

Arts and
humanities



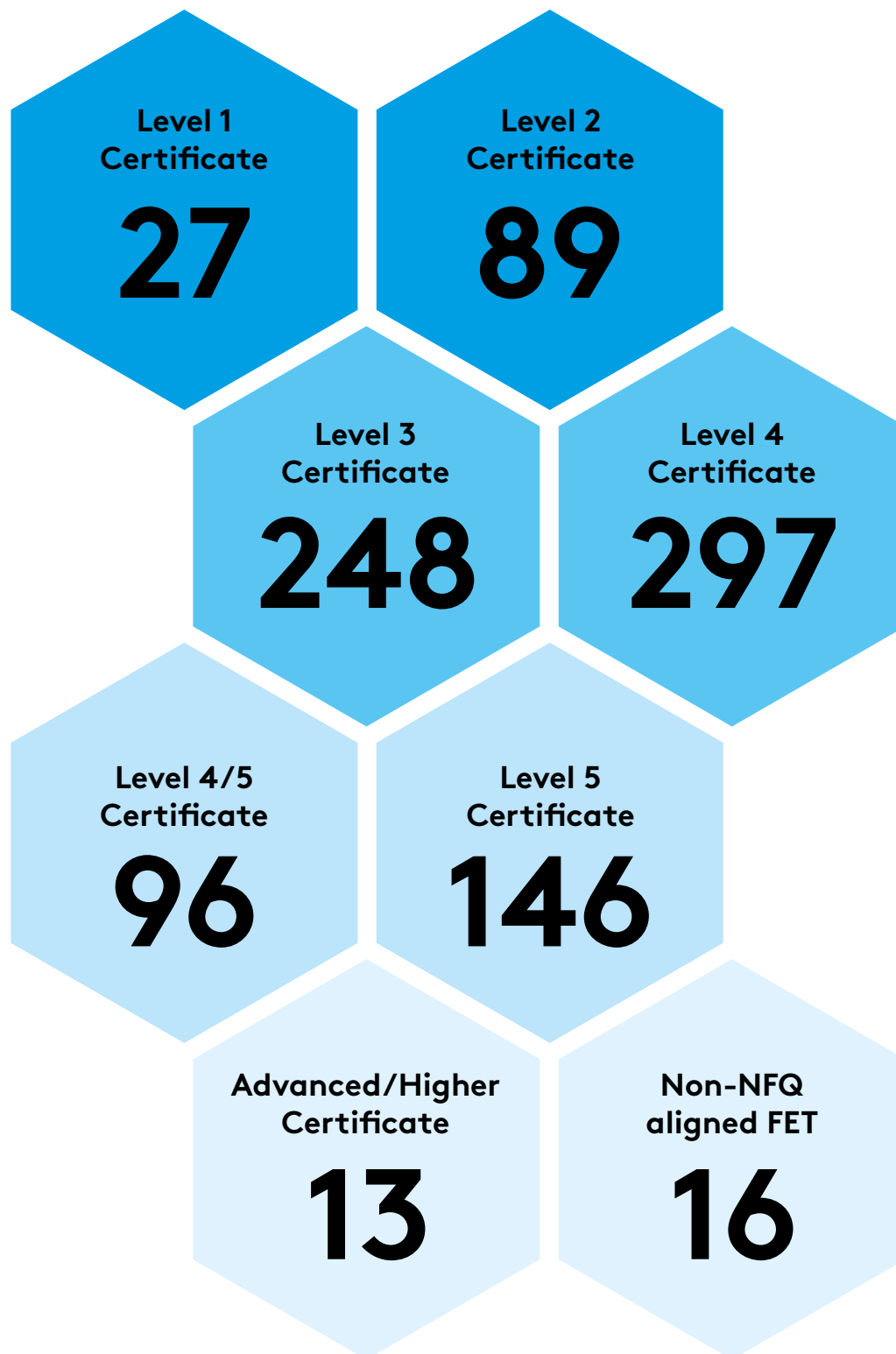
3.1%

Engineering,
manufacturing
and construction



Field of Study (Broad ISCED)	Examples of courses
Generic programmes and qualifications	Employability Skills
	ESOL English Language
	Health and Wellbeing
	Arts and Crafts
Business and administration and law	Start your own Business
	Office Administration
Health and welfare	Nursing Studies
	Applied Social Studies
Services	Beauty Therapy
	Sports, Recreation and Exercise
Arts and humanities	Art, Craft and Design
	Film and TV Production
Education	Early Childhood Care and Education
	Special Needs Assisting
ICT	Computer Systems and Networks
	Computer Basics
Engineering, manufacturing and construction	Welding
	Engineering Technology
Agriculture, forestry, fisheries and veterinary	Horticulture
	Animal Care
Natural sciences, mathematics and statistics	Applied Science/ Laboratory Techniques
	Pre-University Science
Social sciences, journalism and information	Journalism for the Digital Age
	Cultural and Heritage Studies

Irish National Framework of Qualifications (NFQ) or Equivalent⁴



⁴ This excludes learners enrolled in courses that do not lead to an award through a recognised awarding body.

Definition of Terms

Activity

The sum of learners multiplied by the number of courses which they have been enrolled in or completed within a programme or across different programmes, or providers during 2018.

Certification Rate

The sum of only full and partial learner completions that gained an award through a recognised awarding body in 2018.

Certified Completions

In the FET sector, not all learner completions lead to an award through a recognised awarding body in the FET sector. Therefore, certified completions refer only to the total number of certified completions in 2018.

Completions

Total number of learners who have a finish date of a course (regardless of whether the course is certified or not) in 2018. Completions include partial and full completers, but exclude early leavers.

Enrolments

Enrolments are defined as learners who are on course or have completed a course during 2018.

Field of Study

This is defined and categorized by the International Standard Classification of Education (ISCED). Both broad (2-digit) and detailed (4-digit) fields of study are used for categorising Further Education and Training course fields of study.

Partial Completions

Learners who have completed more than 25 per cent but less than 90 per cent of a course and its requirements in 2018.

Inactive

This term is used according to the Eurostat and the International Labour Organisation (ILO) definition which defines inactive as individuals who are neither employed nor unemployed and are not working and not available or looking for work. Inactive in this report includes those learners engaged in home duties, retired, student/trainees, and those inactive for other reasons.

Irish National Framework of Qualifications (NFQ)

This is a framework through which all learning achievements may be measured and related to each other in a coherent way. The many different types and sizes of qualifications included in the NFQ are organised based on their level of knowledge, skill and competence. In some cases, where awards have not been placed on the Irish NFQ, equivalent levels are assigned based on the document 'Qualifications can cross boundaries' and the level assigned to the award on the relevant country's framework (e.g. Cf. Ofqual, Scottish Credit and Qualifications Framework, etc.).

Non-NFQ Aligned courses

This includes completions with certification not aligned with the NFQ.

Learner

A unique individual who has progressed onto a course in the application process. The total number of learners is the sum of all unique individuals in Further Education and Training in 2018.

Long-lasting Condition

This includes anyone who has: 1) blindness or a serious vision impairment, 2) deafness or a serious hearing impairment, 3) a difficulty with basic physical activities (e.g. walking, climbing stairs, reaching, lifting or carrying, etc.), 4) an intellectual disability, 5) a difficulty with learning, remembering or concentrating, 6) a psychological or emotional condition, and/or 7) a difficulty with pain, breathing, any other chronic illness/condition.

Long-term Unemployed

This refers to any person who is unemployed for 12 months or more.

On Course

This refers to those learners who were still on course as of December 31st, 2018.

Full Completions

Learners who have completed 90 per cent or more of the course and its requirements in 2018.

Post-secondary non-tertiary

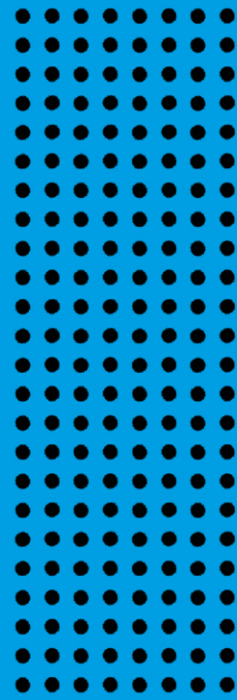
This refers to Post Leaving Certificate NFQ Level 4 or 5, Advanced Certificate NFQ Level 6, other non-NFQ aligned FET, Certificate NFQ Level 4, or Certificate NFQ Level 5.

Short-cycle tertiary education

This refers to third level non-degree courses and includes higher certificate NFQ level 6 courses and diploma NFQ level 7 courses. These courses are usually of one year in duration and are often vocational in nature.

Third Level

This refers to Ordinary Bachelor degree, Honours Bachelor degree, Professional, Post-Graduate, Doctorate or Higher degree courses.



For further information, please contact:

Helen Garner
Data Analytics Unit, SOLAS
Block 1, Castleforbes House
Castleforbes Road, Dublin 1
helen.garner@solas.ie

SOLAS.ie